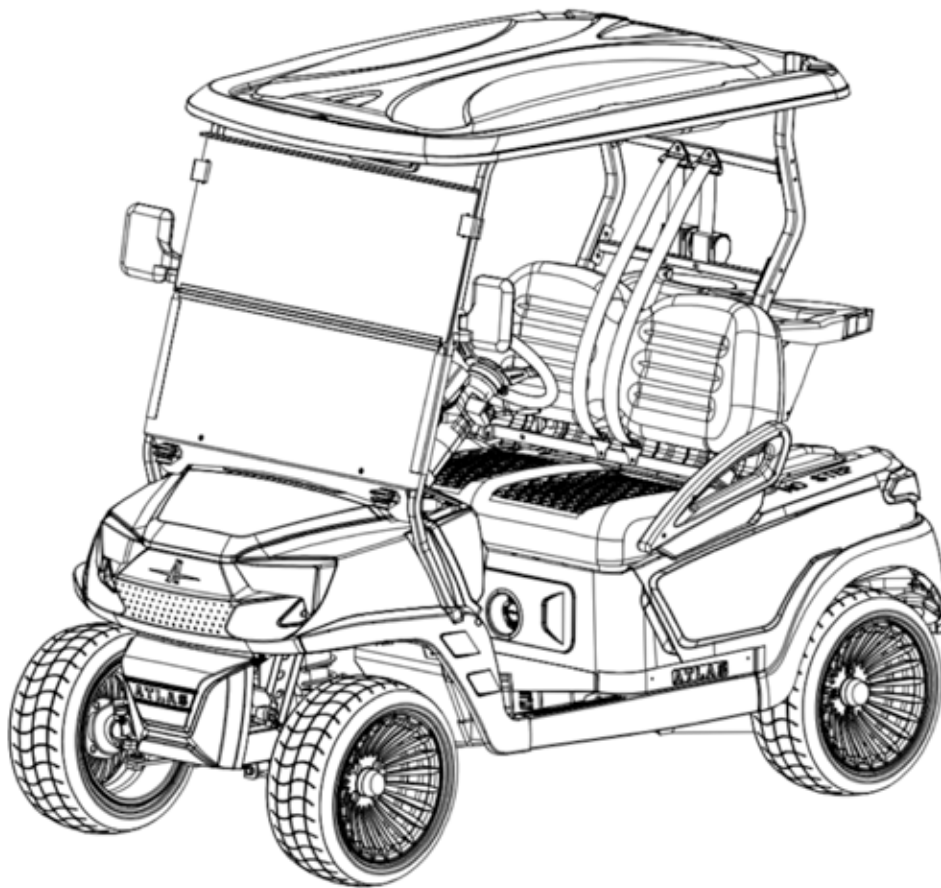


ATLAS



Parts Manual
Atlas Two Passenger



Parts Manual

Atlas Four Passenger

Model 2N

Atlas Carts
111 County Road 214
Liberty Hill, TX 78642
US: (833) UR-ATLAS
OUTSIDE US: (706) 553-4592

Use this manual to identify and order service parts. Refer to the table of contents to find the pages that contain the parts and assemblies.

Table of Contents

SECTION

1

Chassis

Chassis	4
Tire Installation	5
AC Controller	6
Rear Axle Tube Assembly	7–8
Rear Suspension	9
Four Wheel Disc Brake	10

SECTION

2

Body

Steering Wheel Assembly	11
Pedal Installation	12
Brake Pedal Assembly	13
Front Body Installation	14–16
Front Dash Installation	16–18
Rear Body Installation	19–20
Rear Body Base Installation	21–22
Seat Installation	23
EVA spacer under seat	24
3-point seat belt assembly	25
Split Windshield Top Assembly, and Rear Basket Assembly	26–27
Optional Accessories	28

SECTION

3

Electric

Lithium Battery installation	29
Wire Harness	30–32

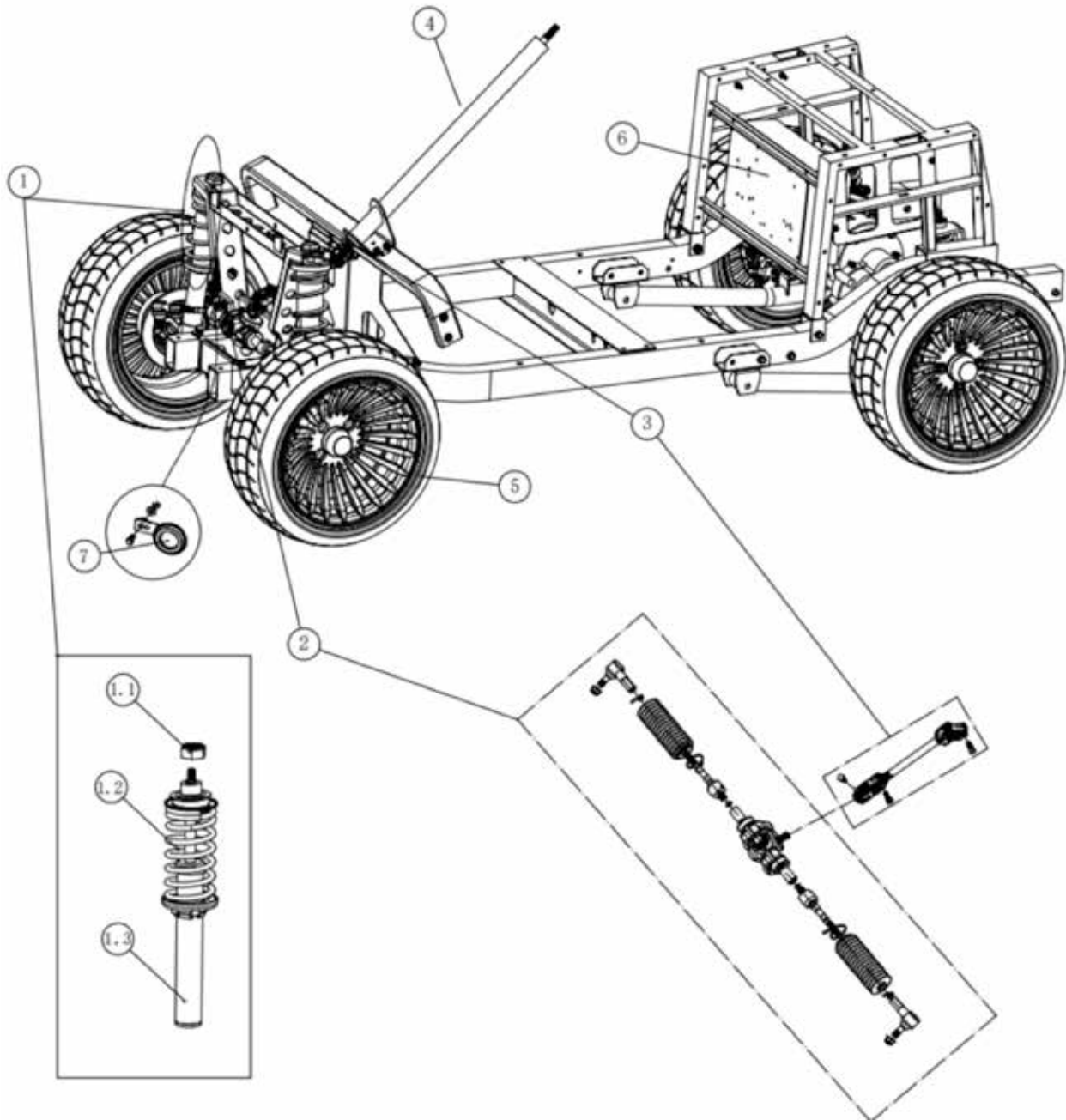
SECTION

4

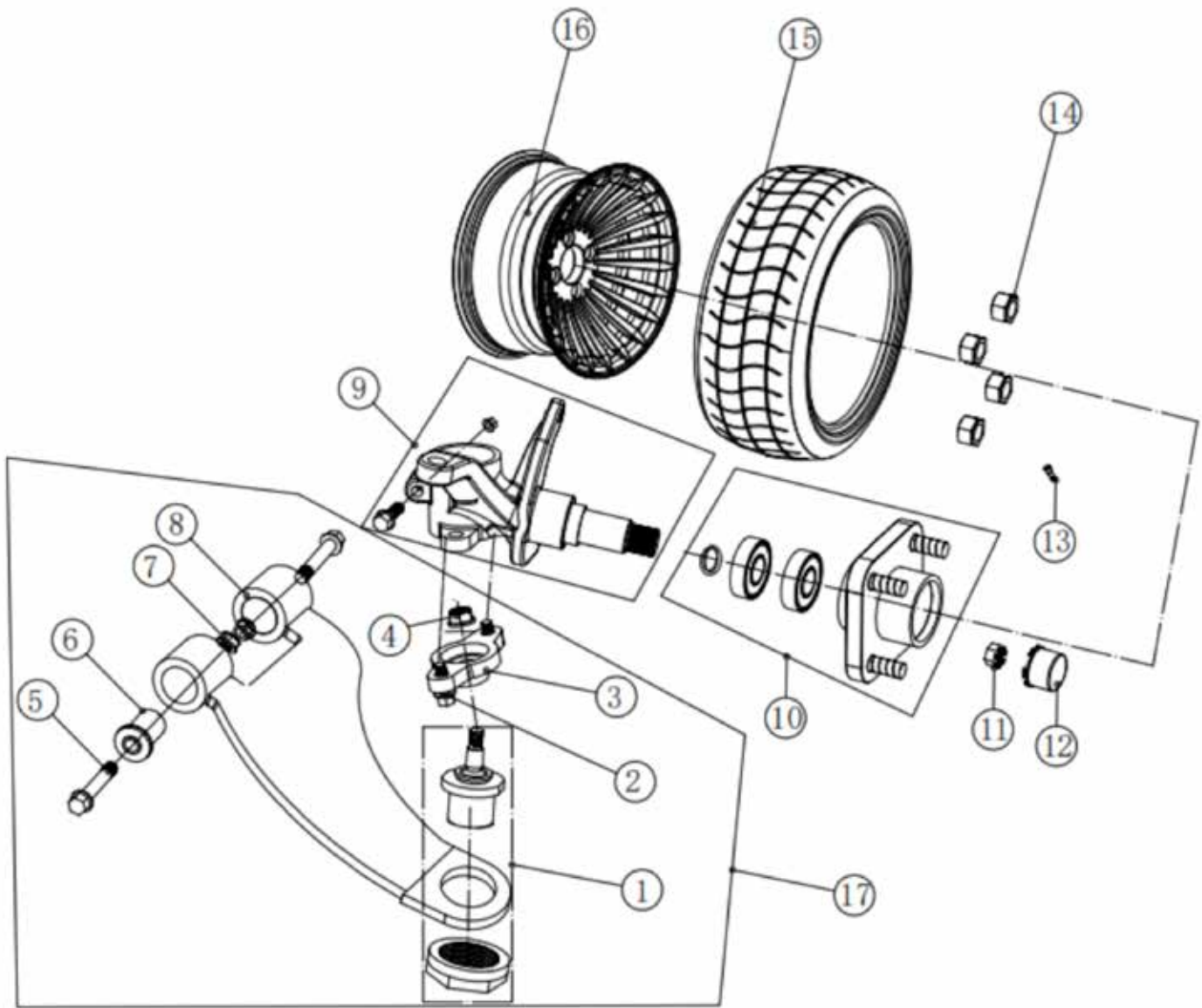
Decals

Safety decals	33–34
Logo and Safety decals	35–36

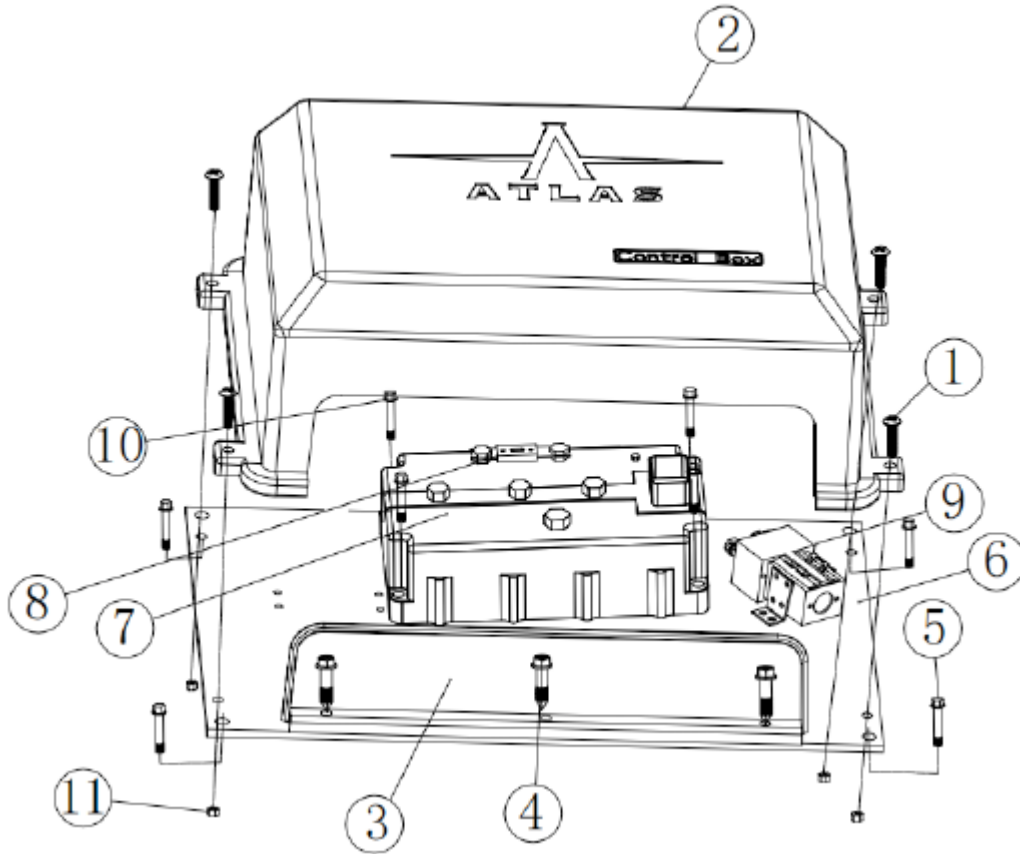
Parts Manual Tracking Sheet	37
---------------------------------------	----



No.	Description	Part Number	Qty	No.	Description	Part Number	Qty
1	Front shock absorber assembly (absorber, spring, w/ fasteners)	2.01.01.02.001	2	4	Steering column, w/ fasteners	4.02.01.01.045	1
1.1	Nut / M35x1.5/1035	4.02.04.01.058	1	5	14" Tire assembly (215/35-14) wheel included	2.01.01.13.012	4
1.2	Front spring	4.02.04.01.020	1	6	Controller assembly for 2N w/ fasteners	2.01.02.01.204.2N	1
1.3	Front shock absorber	4.02.04.01.048	1	7	12V Horn, w/ fasteners	4.04.02.06.021	1
2	73A Steering system assembly	4.02.01.06.001	1				
3	Universal joint assembly, w/ fasteners	4.02.01.01.046	1				



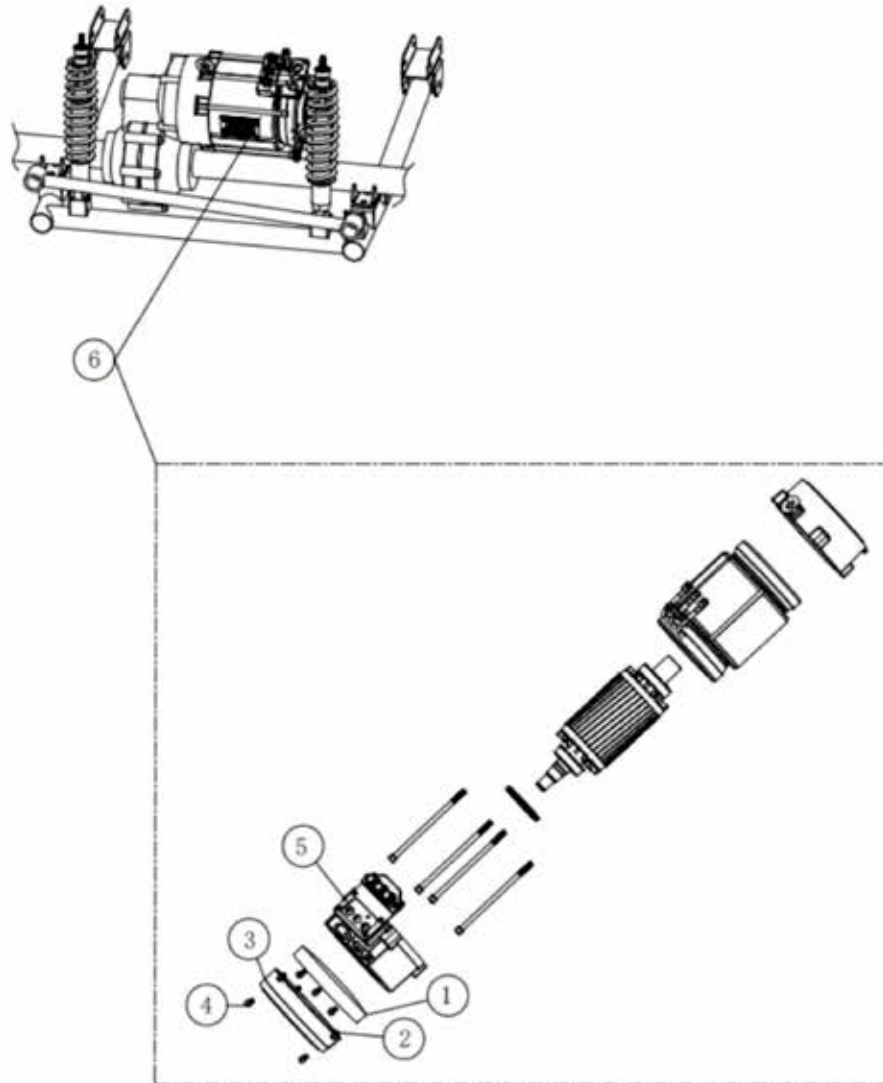
No.	Description	Part Number	Qty	No.	Description	Part Number	Qty
1	Tie Rod, Rocker Arm	4.02.04.01.071	2	10	Hub assembly (Hub / long w/ fasteners)	2.01.01.05.008	1
2	Flange screw M10x25/1035	4.03.02.01.032	4	11	Split nut M20x1.5/1018	4.03.04.03.007	4/cart
3	Spindle shaft base	4.02.01.01.018	2	12	Wheel center cap	4.02.07.04.013	4/cart
4	Self-locking nut M10x1.25/1035	4.03.04.01.004	2	13	Valve stem	4.02.07.03.001	4/cart
5	Flange screw M12x75/1035	4.03.02.01.043	2	14	1/2-20x21x14 Lug nut /08a	4.03.04.03.001	16/cart
6	Rocker arm bushing	4.02.04.01.005	2	15	215/35-14 Tire	4.02.07.01.089	4/cart
7	Self-locking nut M12x1.25/1035	4.03.04.01.005	4	16	14-5 Wheel	4.02.07.02.046	4/cart
8A	Rocker arm LH	3.02.01.30.013	1	17A	Rocker arm assembly LH	2.01.01.04.002	1
8B	Rocker arm RH	3.02.01.30.081	1	17B	Rocker arm assembly RH	2.01.01.04.020	1
9A	Spindle LH	4.02.02.10.006	1				
9B	Spindle RH	4.02.02.10.007	1				



No.	Description	Part Number	Qty
1	Stainless steel flat head bolt M6x25	4.03.03.07.025	4
2	Controller cover / fasteners included	4.05.01.03.003	1
3	Controller cover baffle / fasteners included	4.05.01.03.002	1
4	Stainless steel hexagonal self-tapping cross bolt M5x16 / black	4.03.02.06.007	5
5	Flange screw M6x25/1035	4.03.02.01.005	4
6	Controller aluminum heat sink / fasteners included	4.01.16.09.193	1
7	KCCA0293 Controller 48V 350A for 2N	4.04.01.05.039.2N	1
8	Fuse 400A	4.04.06.10.012	1
9	48V Solenoid / SW180B-108	4.04.01.12.007	1
10	Flange screw M8x25/1035	4.03.02.01.015	4
11	Stainless steel M8	4.03.04.04.004	4

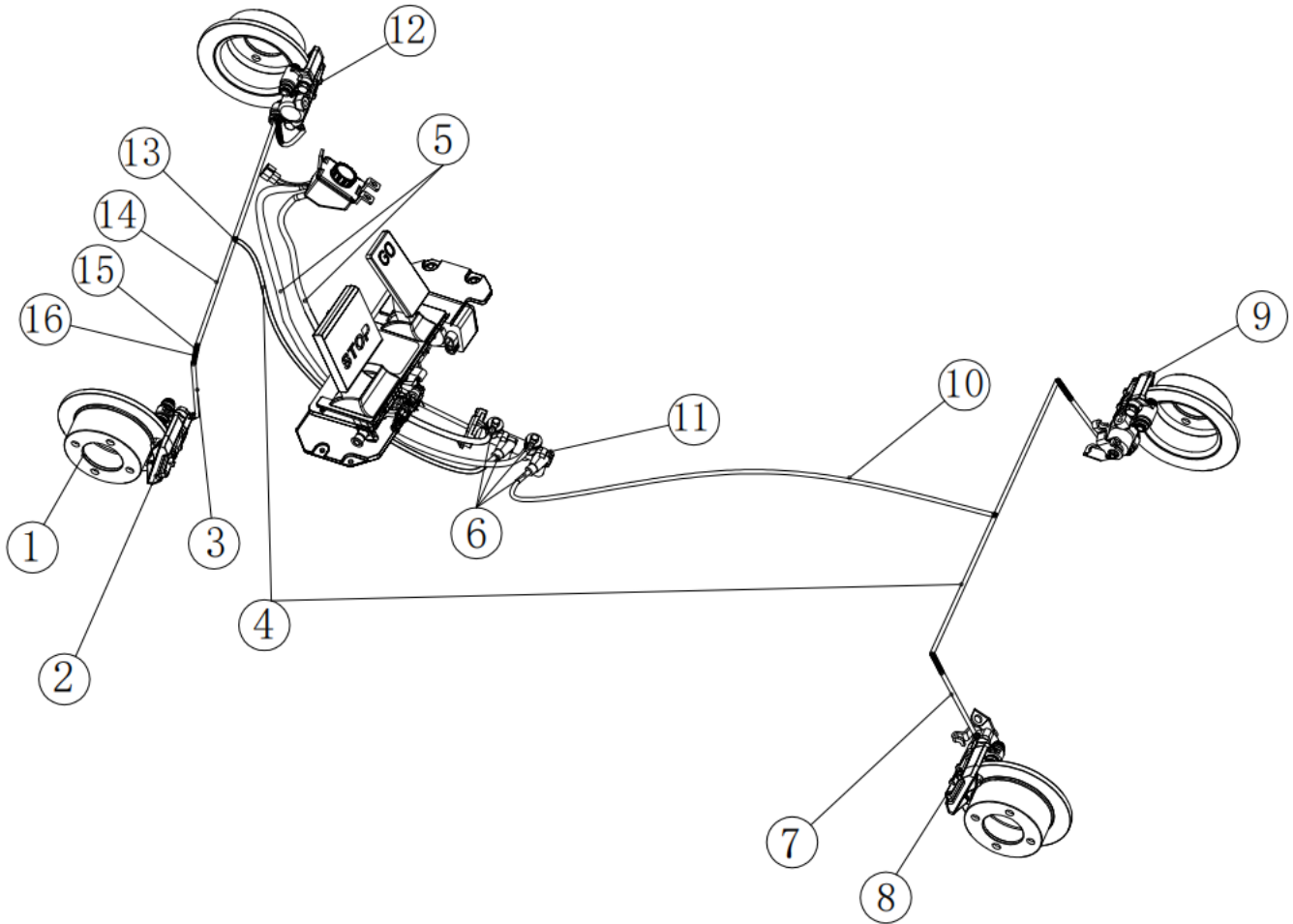
Rear Axle Tube Assembly

No.	Description	Part Number	Qty
1	Flange screw M12x75/1035	4.03.02.01.043	2
2	Rocker arm bushing	4.02.04.01.005	2
3	Pipe cover 45mm diam.	4.05.04.03.005	2
4	Lock nut M12x1.25 /1035	4.03.04.01.005	4
5	Lock nut M12x1.25 /1035	4.03.04.01.005	2
6	Rear suspension bushing	4.02.04.02.004	2
7	Flange screw M12x85 /1035	4.03.02.01.058	2
8	Flange screw M10x70 /1035	4.03.02.01.038	4
9	Bracket rear axle Tube	3.02.01.01.035	2
10	Self-locking nut with locking plate M10x1.25 /1035	4.03.04.01.004	4
11	DCDC Converter DC2250-4812 500W	4.04.01.13.014	1
12	On board charger (lithium) 48V25A	4.04.01.06.126	1
13	Charger mounting plate	3.02.01.01.175	1
14	Self-locking nut with locking plate M10x1.25 /1035	4.03.04.01.004	2
15	Rear shock absorber assembly	2.01.01.02.021	2
16	Flange screw M12x30 /1035	4.03.02.01.041	4
17	Rear damper gasket 30x3.5	4.02.04.01.028	4
18	Self-locking nut with locking plate M10x1.25 /1035	4.03.04.01.004	2
19	Stabilizer bar	3.02.01.01.036	1
20	Self-locking nut with locking plate M10x1.25 /1035	4.03.04.01.004	2
21	Rear axle tube Kit	3.02.01.01.099	2
22	Flange screw M10x50 /1035	4.03.02.01.035	2
23	Self-locking nut with locking plate M10x1.25 /1035	4.03.04.01.004	2

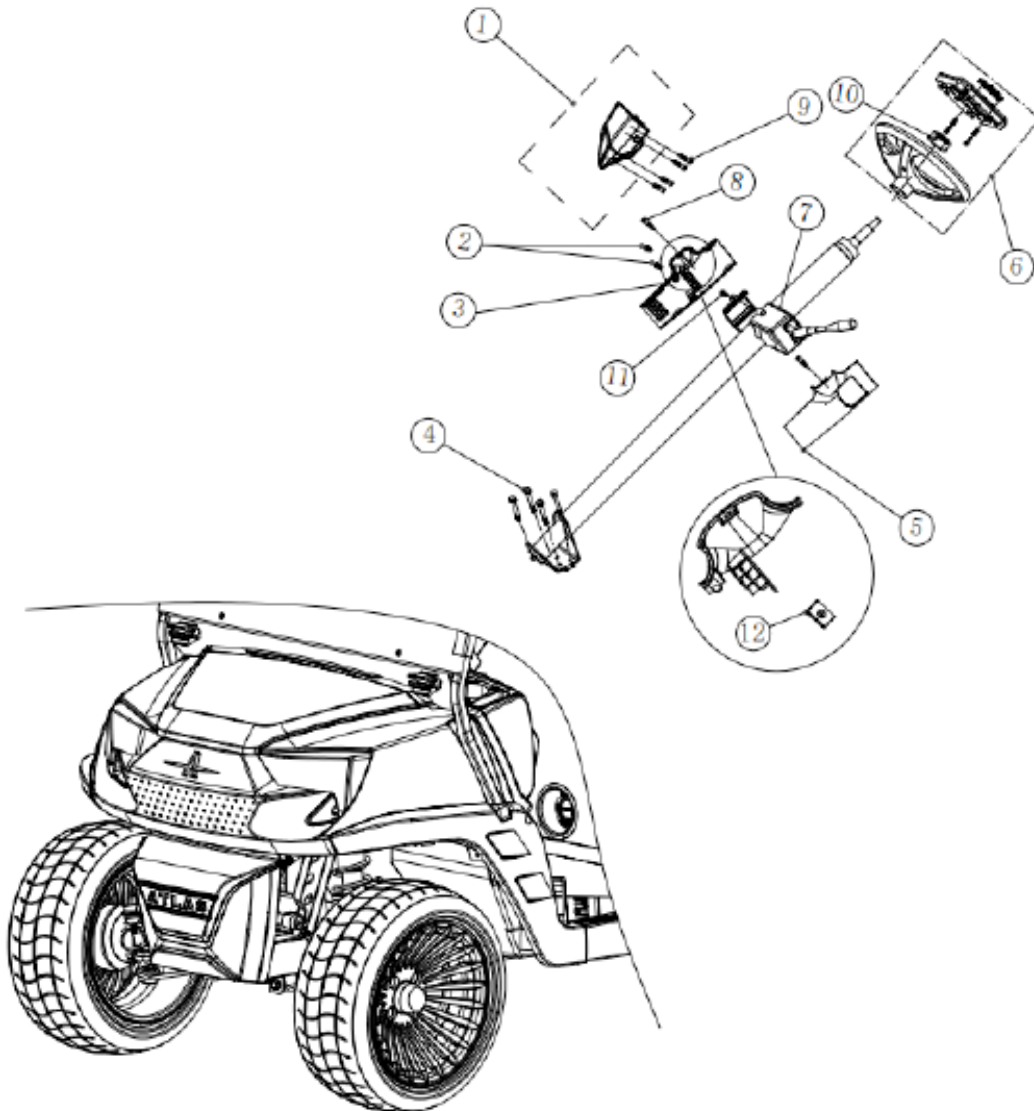


No.	Description	Part Number	Qty
1	EM brake connection board	3.11.01.01.096	1
2	Stainless steel pan head round head hexagon socket screw M6x16	4.03.03.15.033	6
3	EM brake PK35	4.04.01.03.034	1
4	Stainless steel DTN912 cup head socket head cap bolt M5x30	4.03.03.03.003	2
5	YDQ3-4-5680 Speed sensor	4.04.01.03.032	
6	AC motor 48v 5kw with EM brake / fasteners included	4.04.01.02.026	1

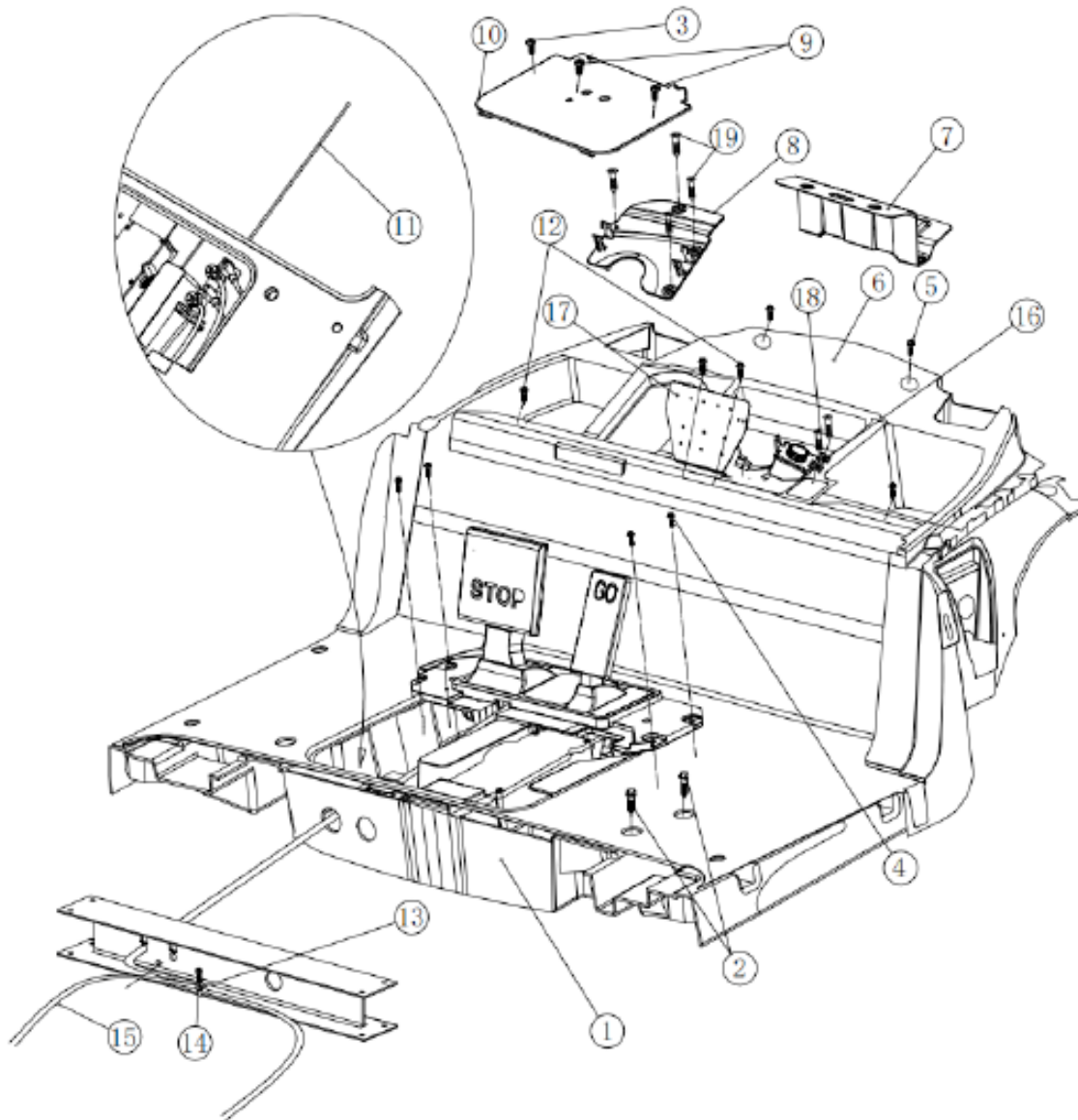
Four Wheel Disc Brake



No.	Description	Part Number	Qty
1	Brake disc	4.02.05.03.004	4
2	Front caliper LH	4.02.05.01.038	1
3	Front hose L-380	4.02.02.10.054	2
4	Brake pipe L-700 Front 1pcs, Rear 2pcs	4.02.02.10.050	3
5	Oil pipe 8x15m	4.02.02.12.025	1
6	10-16 Hose clamp	4.02.02.12.010	4
7	Rear hose L-300	4.02.02.10.049	2
8	Rear caliper LH	4.02.05.01.037	1
9	Rear caliper RH	4.02.05.01.036	1
10	Brake pipe L-620	4.02.02.10.060	1
11	Master cylinder	4.02.05.01.018	1
12	Front caliper RH	4.02.05.01.039	1
13	3-way valve	4.02.02.12.011	2
14	Front brake pipe 250mm	4.02.02.12.001	2
15	Hollow screw M10x25x1.0/1018	4.03.02.09.002	4
16	Washer C10	4.02.02.12.007	8

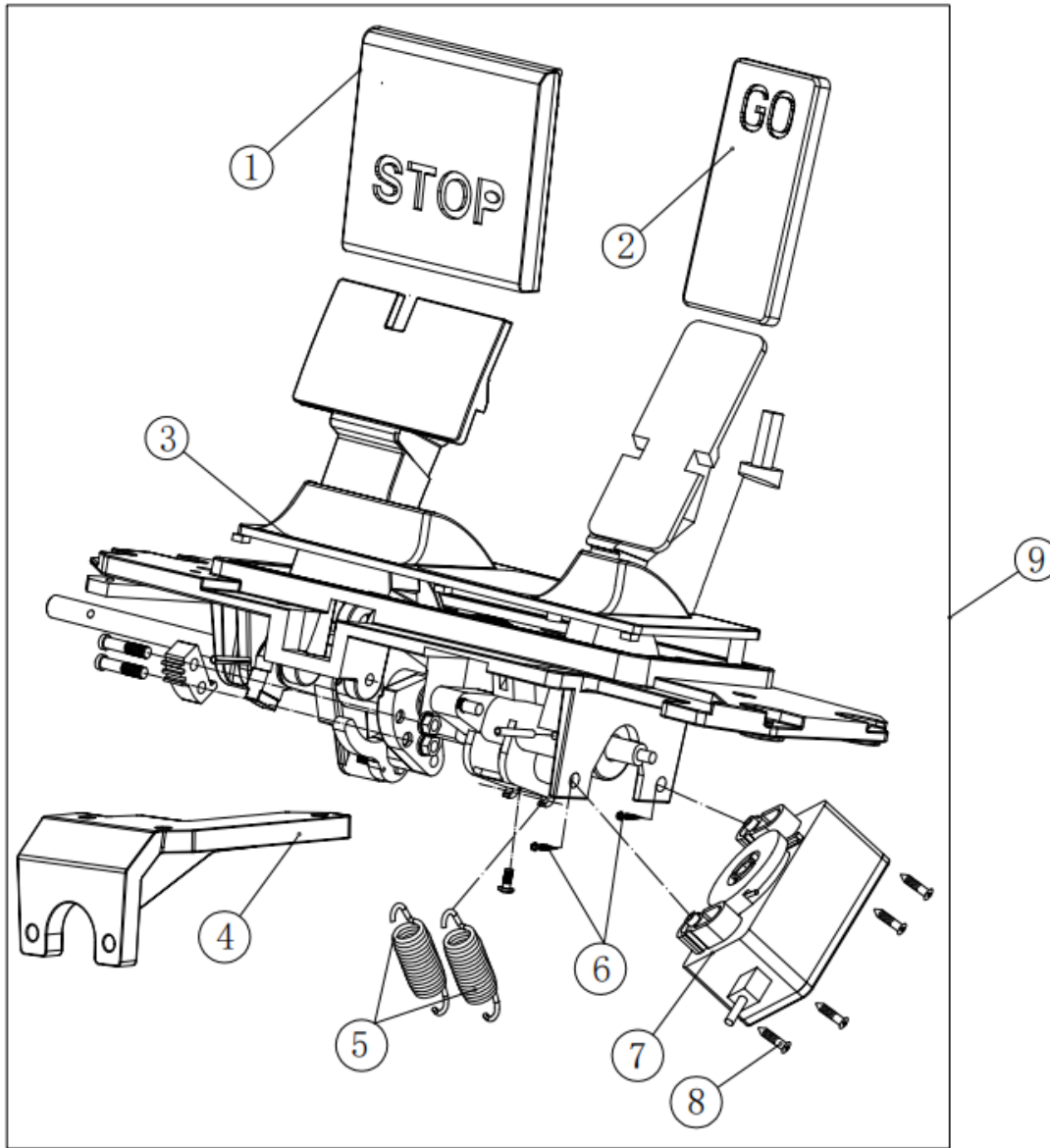


No.	Description	Part Number	Qty
1	Speed meter, fasteners included	2.06.03.03.004	1
2	Stainless steel flat head self-tapping screw M5x16/black	4.03.03.15.010	2
3	Steering column cover RH, fasteners included	4.05.01.33.021	1
4	Flange screw M8x20/1035	4.03.02.01.014	4
5	Steering column cover LH, fasteners included	4.05.01.33.020	1
6	Golf steering wheel	4.02.01.01.035	1
7	Combination switch (turn signal, lights, horn)	4.04.14.01.007	1
8	Stainless steel flat head self-tapping screw M5x16/black	4.03.03.15.010	2
9	Stainless steel large flat head self-tapping screw M4x16 /black	4.03.03.15.013	4
10	Self-locking nut M12x1.25/1035	4.03.04.01.005	1
11	Stainless steel pan head cross machine nail M5x20	4.03.03.08.003	2
12	Stainless steel U-shape clip	4.03.06.06.004	2

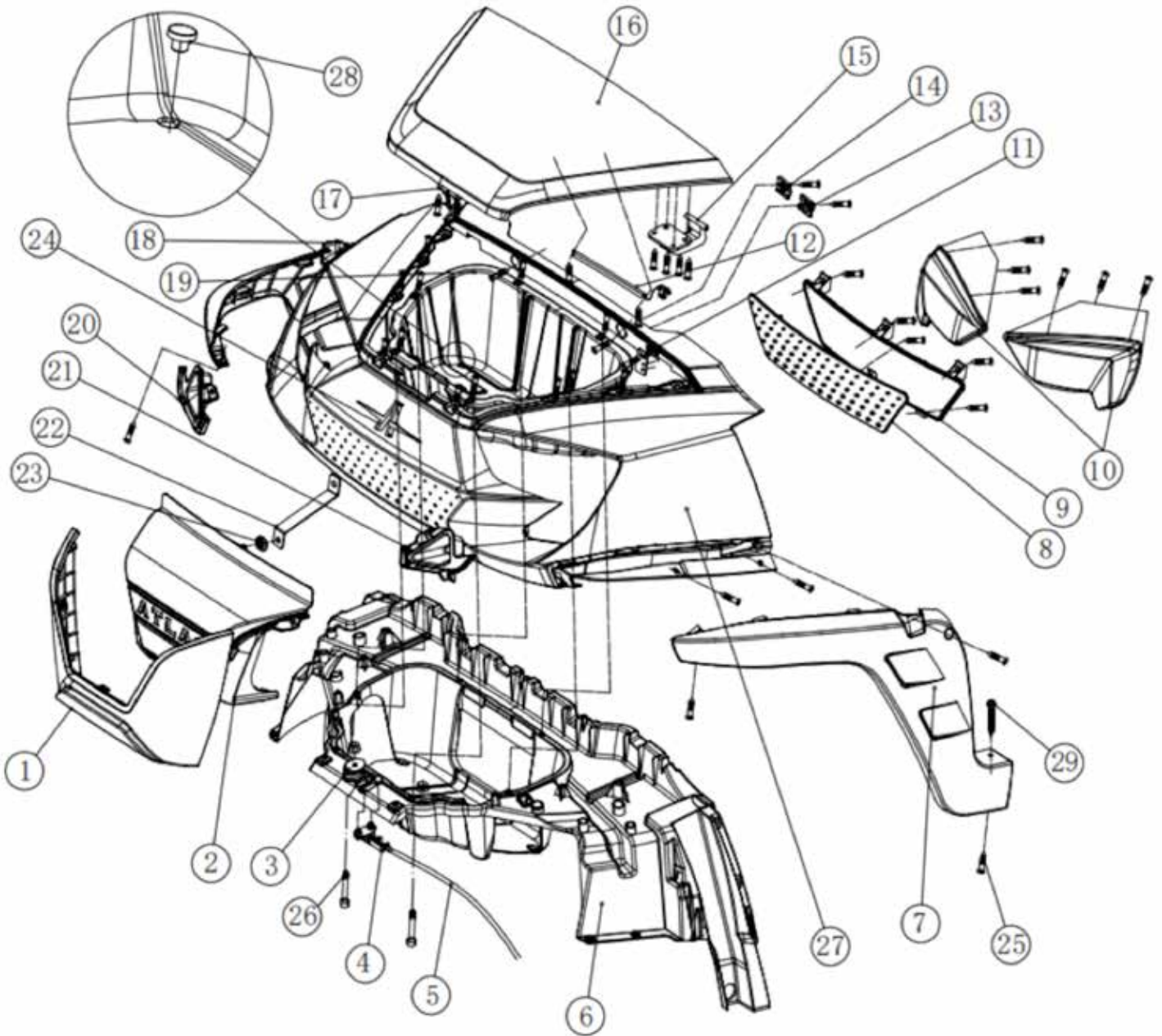


No.	Description	Part Number	Qty	No.	Description	Part Number	Qty
1	Front pedal box support	4.05.01.01.002	1	11	Brake pipe L-620	4.02.02.10.060	1
2	Hexagonal (dovetail) self-tapping screw 12x1-1/2/1018	4.03.02.06.012	2	12	Hexagonal (dovetail) self-tapping bolt 12x1-1/2/1018	4.03.02.06.012	4
3	Stainless steel large flat head self-tapping screw M5x25 /black	4.03.04.15.017	1	13	3-way valve	4.02.02.12.011	1
4	Hexagon washer self-drilling screw M8-12x50/1022a	4.03.02.06.023	4	14	Flange screw M6x35/1035	4.03.02.01.007	4
5	Flange screw M6x35/1035	4.03.02.01.007	2	15	Brake pipe L-700 (Front, 1 pcs, Rear, 2pcs)	4.02.02.10.050	1
6	Foot pedal frame	4.05.01.01.043	1	16	Brake reservoir, w/ fasteners	4.02.09.193	1
7	Disc brake pedal frame cover	4.05.01.01.068	1	17	Main circuit fuse base electronic board, w/ fasteners	3.05.14.018	1
8	Steering column lower cov. plate	4.05.01.33.082	1	18	Stainless steel large flat head self-tapping screw M5x16/black	4.03.03.15.010	2
9	Stainless steel large flat head self-tapping screw M5x16 /black	4.03.03.15.010	2	19	Stainless steel large flat head self-tapping screw M5x16/black	4.03.03.15.010	4
10	Pedal cover, w/ fasteners	4.05.01.01.010	1				

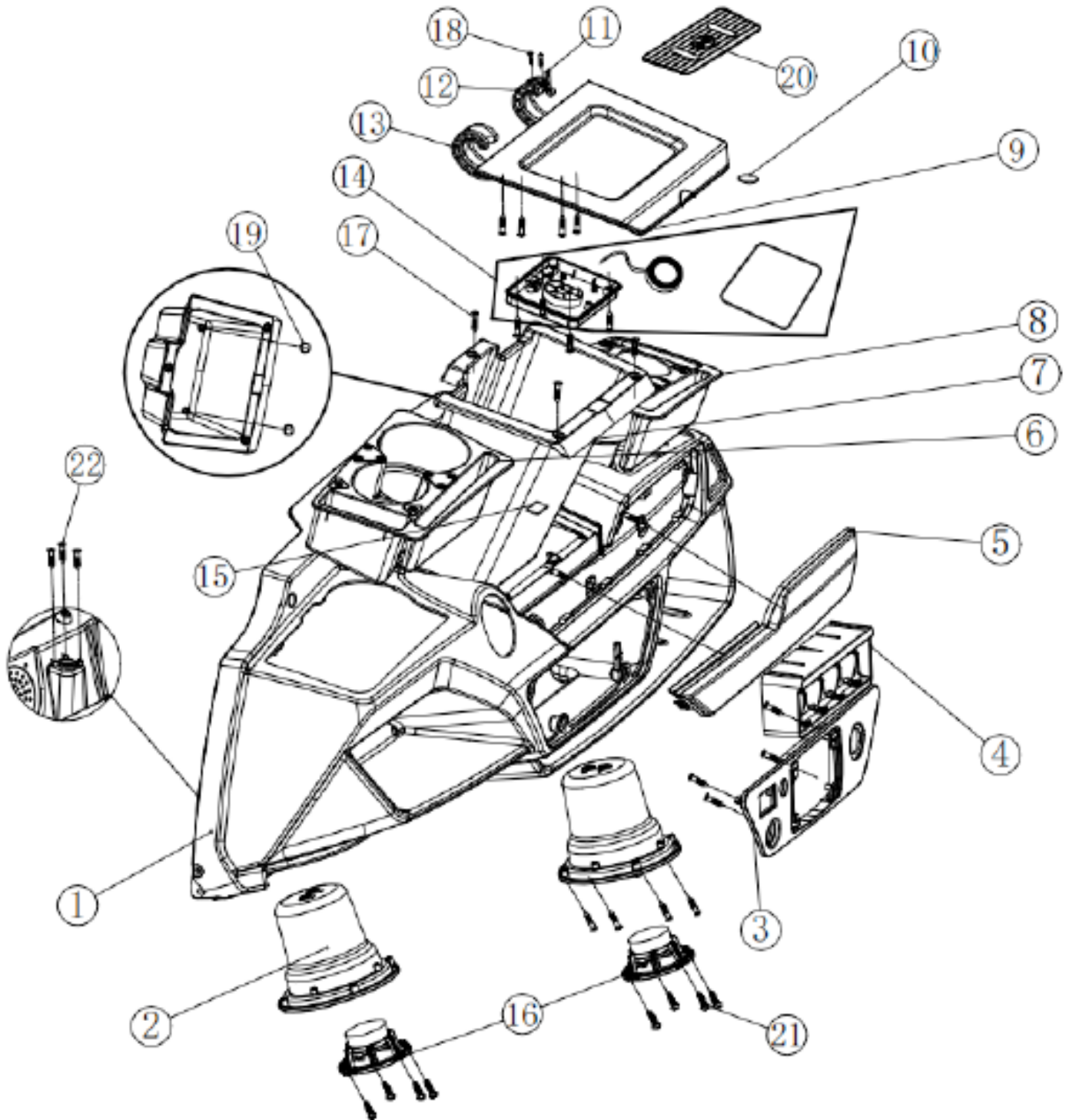
Brake Pedal Assembly



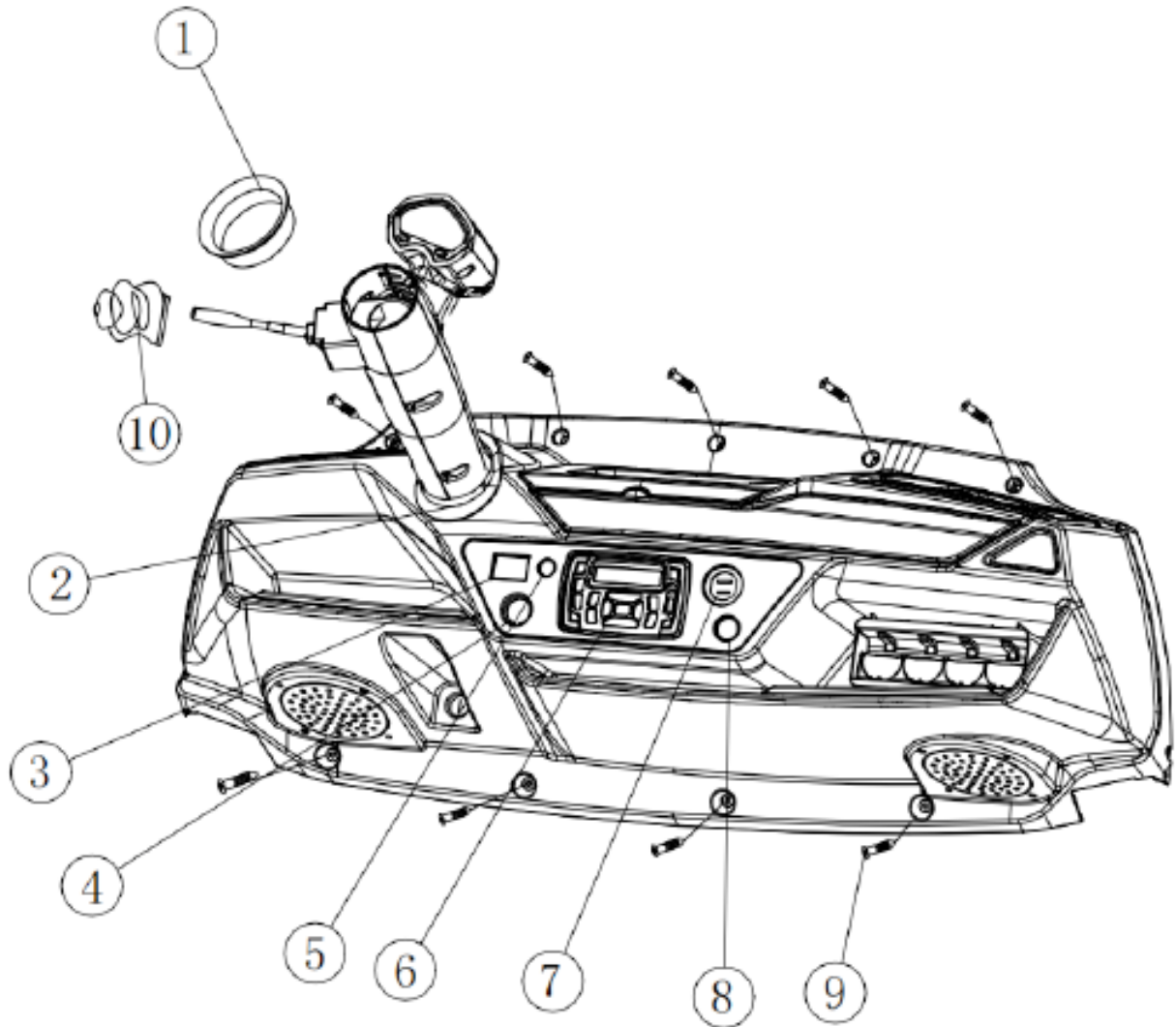
No.	Description	Part Number	Qty
1	Aluminum pedals without parking brake pedal rubber (STOP)	4.02.02.08.012	1
2	Aluminum pedal without parking accelerator pedal rubber (GO)	4.02.02.08.010	1
3	Pedal plastic base	4.02.02.08.007	1
4	Disc brake master cylinder bracket / aluminum	3.02.01.08.032	1
5	Accelerator pedal spring	4.02.02.04.013	2
6	Hexagonal (pointed tail) self-tapping screw 12#x3/4-2/1018	4.03.02.06.027	2
7	Accelerator box, fasteners included	2.01.02.02.003	1
8	Stainless steel pan head cross machine nail M4x12	4.03.03.08.005	4
9	Pedal assembly, fasteners included	2.01.01.03.201	1



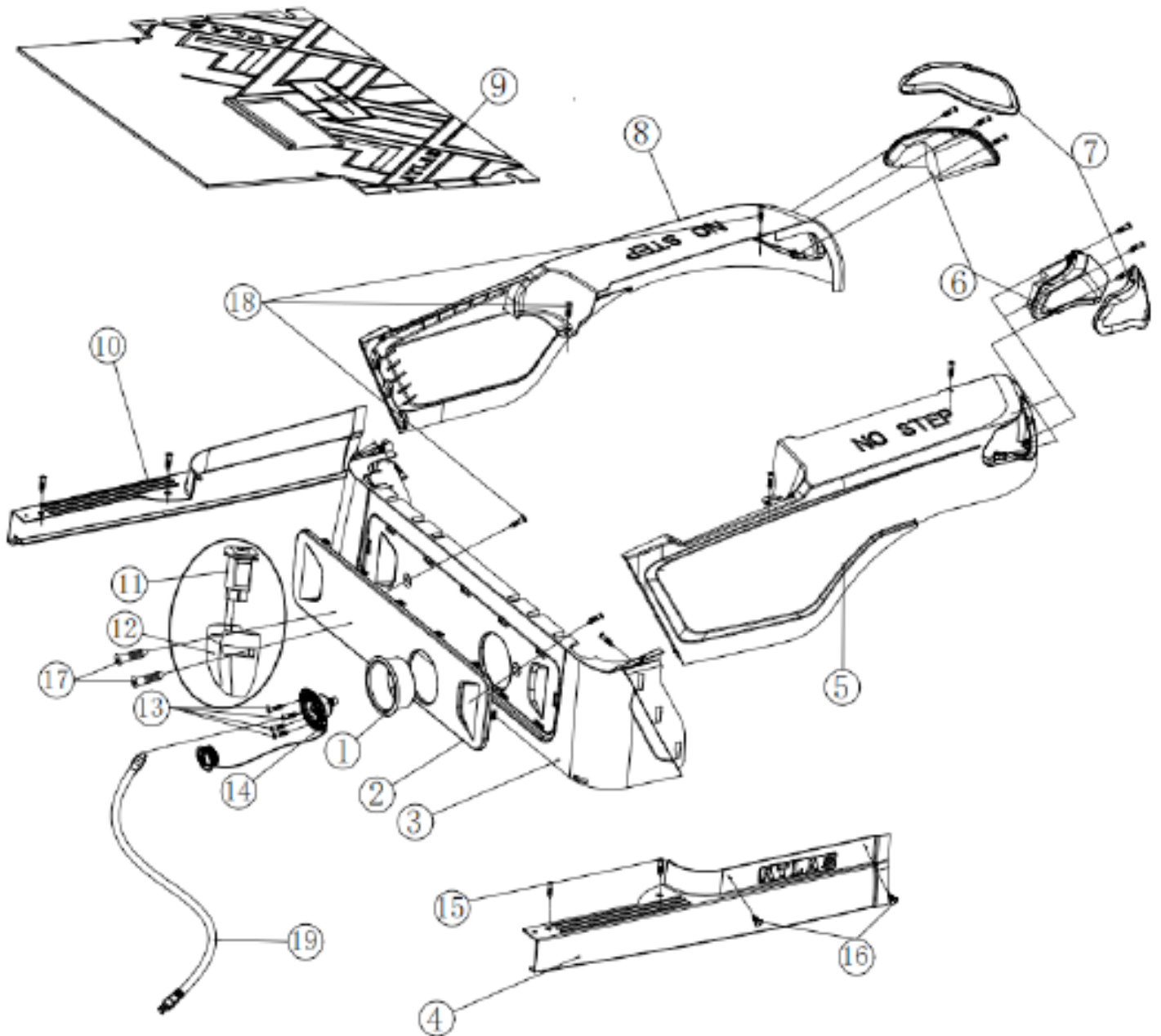
No.	Description	Part Number	Qty
1	Plastic bumper base w/ fasteners	4.05.01.01.105	1
2A	Plastic bumper (not painted) w/ fasteners	4.05.01.01.104	1
2B	Plastic bumper (painted color) w/ fasteners	3.06.06.06.005	1
3	Shock spring stainless steel, w/ fasteners	4.03.07.258	1
4	Front cowl lock plate, w/ fasteners	4.03.07.259	1
5	Front cover storage lock pull cable	4.02.02.03.013	1
6	Front cowl under body, w/ fasteners	4.05.01.01.091	1
7	Front fender flare LH, w/ fasteners	4.05.01.01.102	1
8	Grill board	4.05.01.01.094	1
9	Grill barrier board with studs and fasteners	4.05.01.01.095	1
10A	Front LED light LH, w/ fasteners	4.04.06.12.111	1
10B	Front LED light RH, w/ fasteners	4.04.06.12.112	1
11	Front cowl micro switch mounting plate, w/ fasteners	3.11.01.01.101	1
12	Front storage box light bar, micro switch w/ fasteners	2.01.02.02.008	1
13	Front cowl hinge plate LH, w/ fasteners	4.05.01.01.098	2
14	Front cowl hinge plate RH, w/ fasteners	4.05.01.01.109	2
15	Front cowl hinge, w/ fasteners	4.05.01.01.097	1
16A	Front cowl hood (not painted), w/ fasteners	4.05.01.01.096	1
16B	Front cowl hood (painted color), w/ fasteners	3.06.06.06.002	1
17	Front storage box lock, w/ fasteners	3.11.01.01.100	1
18	Front fender flare RH, w/ fasteners	4.05.01.01.103	1
19	Front storage box, w/ fasteners	4.05.01.01.088	1
20	Front cowl trim RH, w/ fasteners	4.05.01.01.100	1
21	Front cowl trim LH w/ fasteners	4.05.01.01.099	1
22	Mounting bracket on front plastic bumper, w/ fasteners	3.05.14.013	1
23	Protective bushing (inner dia. 8mm, outer dia. 10mm)	4.05.04.09.048	1
24	Logo Front logo	4.05.03.01.009	1
25	Stainless steel flat head self-tapping screw 5x16 /black	4.03.03.15.010	62
26	Flange screw M6x35/1035	4.03.02.01.007	2
27A	Front cowl without hood (not painted), w/ fasteners	4.05.01.01.093	1
27B	Front cowl without hood (painted color), w/ fasteners	3.06.06.06.001	1
28	Rubber plug	4.05.04.03.086	2
29	Weihua head hexagon socket self-drilling screw 6.3x60/1022a	4.03.03.12.030	2



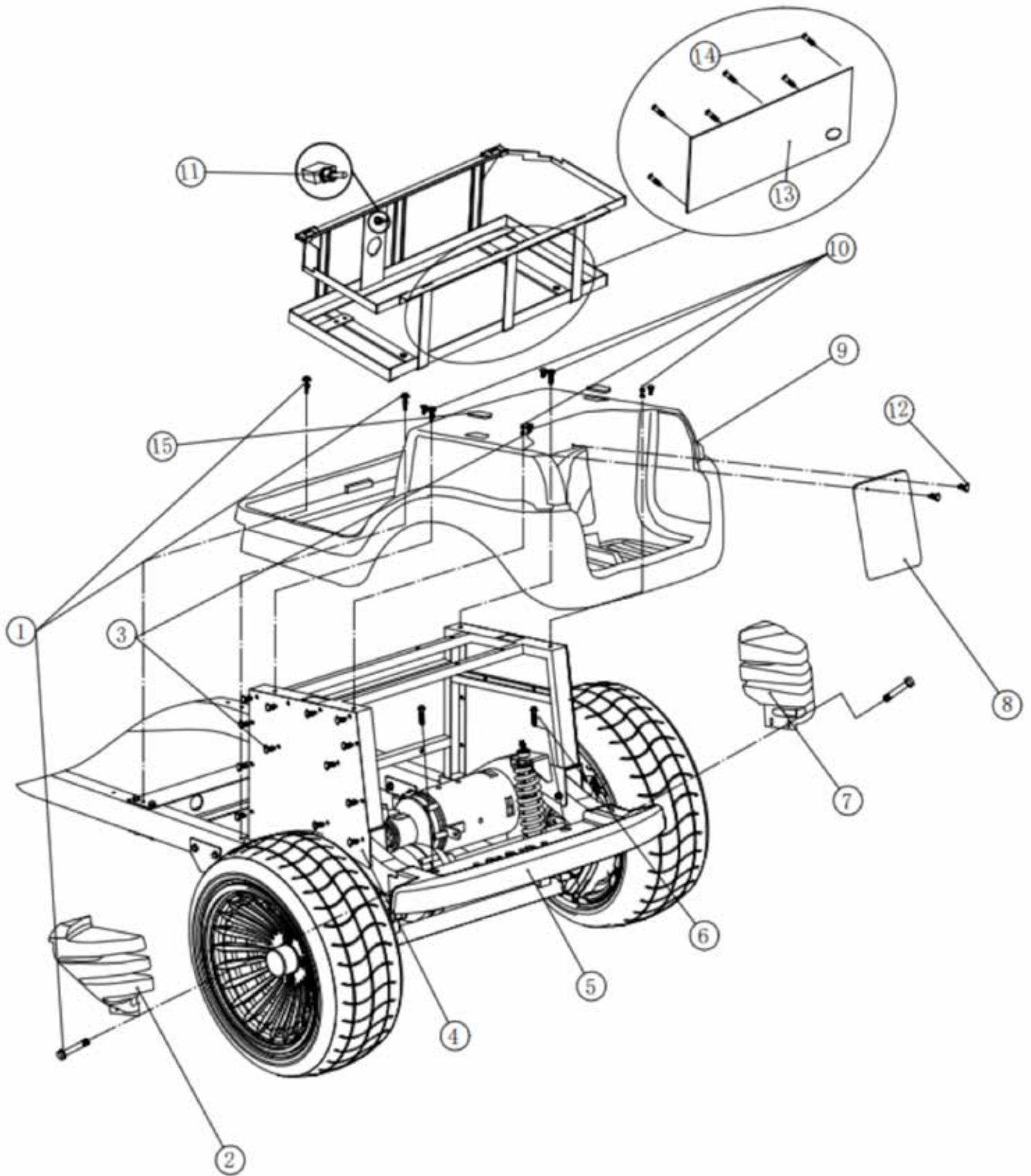
No.	Description	Part Number	Qty
1	Dashboard, w/ fasteners	4.05.01.01.081	1
2	Speaker cover, w/ fasteners	4.05.01.01.086	2
3	Center control panel, w/ fasteners	4.05.01.01.082	1
4	Golf ball holder	4.05.01.01.101	1
5A	Dash trim (not painted), w/ fasteners	4.05.01.01.083	1
5B	Dash trim (painted color), w/ fasteners	3.06.06.06.007	1
6	Cup holder LH	4.05.01.01.084	1
7	Front storage box, w/ fasteners	4.05.01.01.088	1
8	Cup holder RH	4.05.01.01.085	1
9	Storage box lid, w/ fasteners	4.05.01.01.087	1
10	Round magnet on storage box cover 15x3	4.04.06.14.006	1
11	Stop positioning damper (0.3NM), w/ fasteners	4.03.07.257	1
12	Storage box hinge LH, w/ fasteners	4.05.01.01.089	1
13	Storage box hinge RH, w/ fasteners	4.05.01.01.090	1
14	Wireless charging box assembly, w/ fasteners	2.01.02.04.022	1
15	Storage box square magnet 20x10x4	4.04.06.14.004	1
16	4.5" Speaker	4.04.11.02.047	2
17	Stainless steel flat head self-tapping screw 5x16 /black	4.03.03.15.010	30
18	Stainless steel countersunk head cross self-tapping screw M3x10	4.03.03.01.0120	2
19	Rubber plug	4.05.04.03.086	2
20	Wireless charger non-slip pad	4.05.04.03.087	1
21	Stainless steel pan head cross self-tapping screw m4x16	4.03.03.01.019	8
22	Cross large flat head and flat tail self-tapping screw M5x10 / 1018	4.03.02.006	3



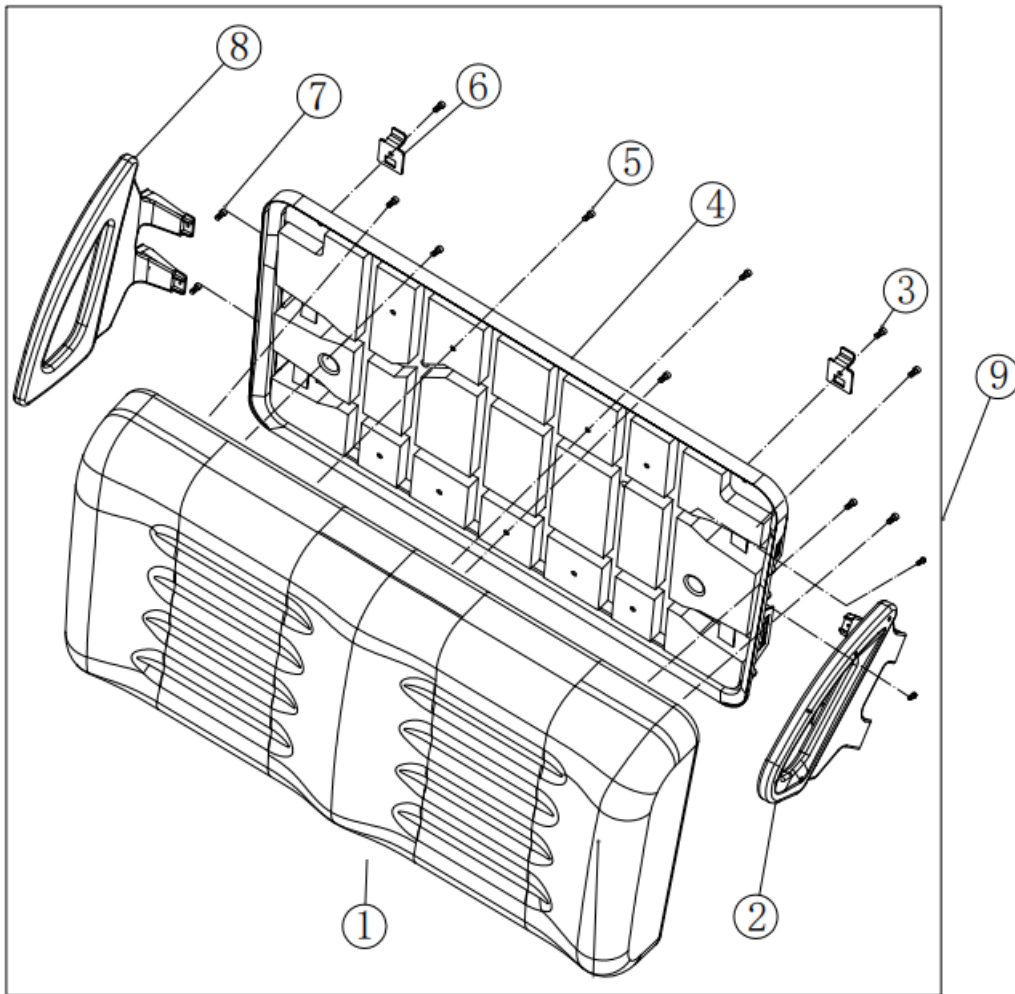
No.	Description	Part Number	Qty
1	Steering column rubber cover / upper	4.05.01.33.048	1
2	Steering column round cover / lower	4.05.02.01.152	1
3	State of charge indicator (lithium)	4.04.01.10.010	1
4	Ignition Key switch assembly. (includes 3 keys, ignition lock, front storage lock)	4.04.02.02.014	1
5	Hazard light switch	4.04.02.11.002	1
6	FM radio Bluetooth	4.04.14.02.025	1
7	USB port 4.2A	4.04.07.103	1
8	Charging indicator	4.04.01.07.045	1
9	Stainless steel flat head self-tapping screw 5x25 /black	4.03.03.15.017	9
10	Combination switch dust cover	4.05.01.03.011	1



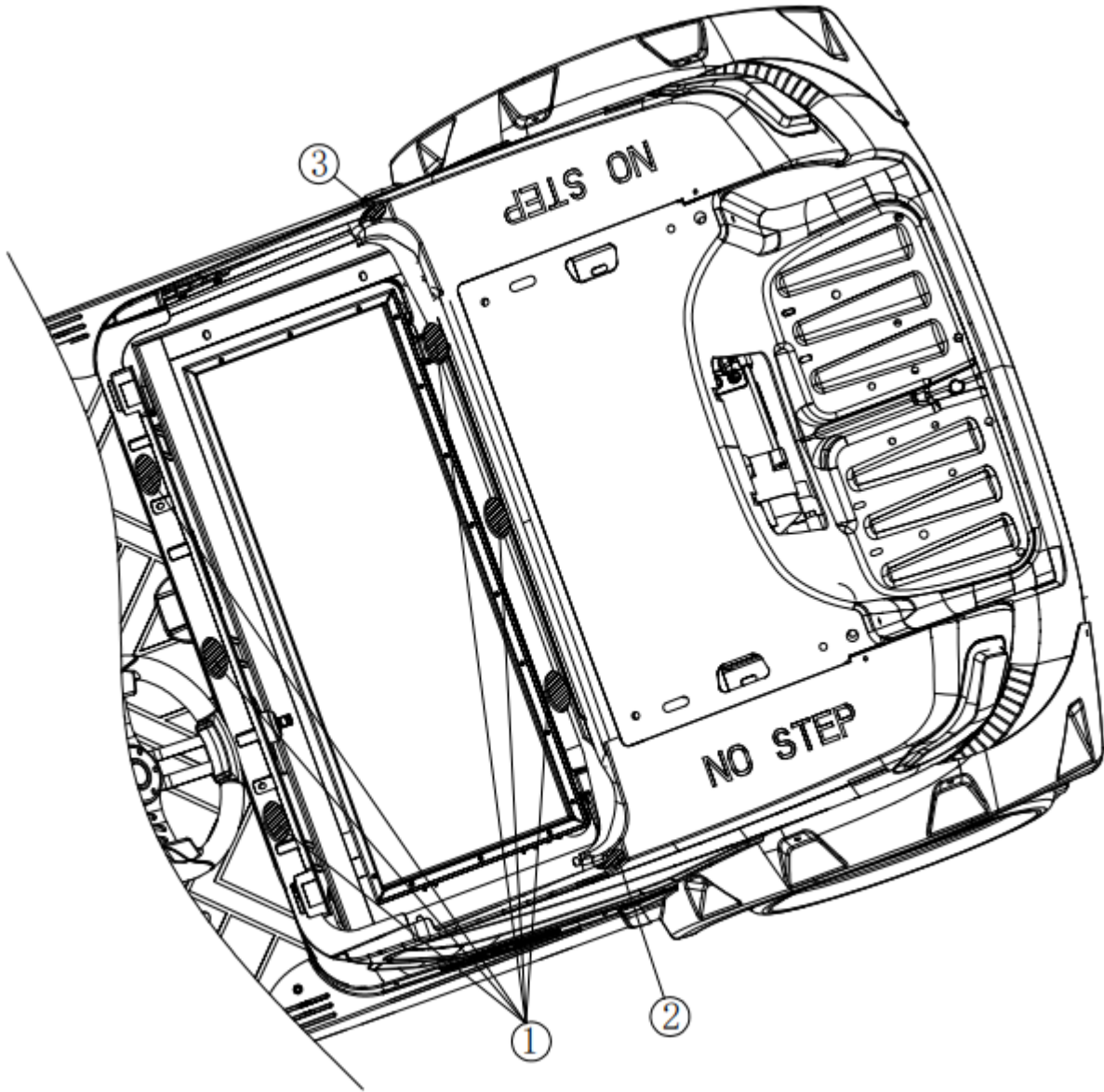
No.	Description	Part Number	Qty
1	Charging plug mount base, w/ fasteners	4.05.01.03.018	1
2A	Charging receptacle front panel (not painted), w/ fasteners	4.05.01.01.078	1
2B	Charging receptacle front panel (painted color), w/ fasteners	3.06.06.06.006	1
3	Rear seat panel, w/ fasteners	4.05.01.01.077	1
4	Running board LH, w/ fasteners	4.05.01.01.079	1
5A	Rear body LH (not painted), w/ fasteners	4.05.01.01.073	1
5B	Rear body LH (painted color), w/ fasteners	3.06.06.06.003	1
6A	Rear taillight LH, w/ fasteners	4.04.06.12.115	1
6B	Rear taillight RH, w/ fasteners	4.04.06.12.116	1
7A	Rear taillight bezel LH / black	4.05.01.01.075	1
7B	Rear taillight bezel RH / black	4.05.01.01.076	1
7C	Rear taillight bezel LH / (painted color)	3.06.06.06.008	1
7D	Rear taillight bezel RH / (painted color)	3.06.06.06.009	1
8A	Rear body RH (not painted), w/ fasteners	4.05.01.01.074	1
8B	Rear body RH (painted color), w/ fasteners	3.06.06.06.004	1
9	Floor mat	4.05.01.19.006	1
10	Running board RH, w/ fasteners	4.05.01.01.080	1
11	Forward/Reverse switch, w/ fasteners	4.04.02.01.021	1
12	Forward/Reverse switch base, w/ fasteners	4.05.01.03.005	1
13	Stainless steel pan head cross machine screw M4x25	4.03.03.01.006	4
14	Charge receptacle, cover included	4.04.07.130	1
15	Weihua head hexagon socket self-drilling screw 6.3x60/1022a	4.03.03.12.030	4
16	Plastic rivet C104	4.05.04.05.003	12
17	Stainless steel pan head cross self-tapping screw M6x30	4.03.03.01.0110	2
18	Stainless steel flat head self-tapping screw 5x16 /black	4.03.03.15.010	14
19	US type charger power cord	4.04.03.10.025	1



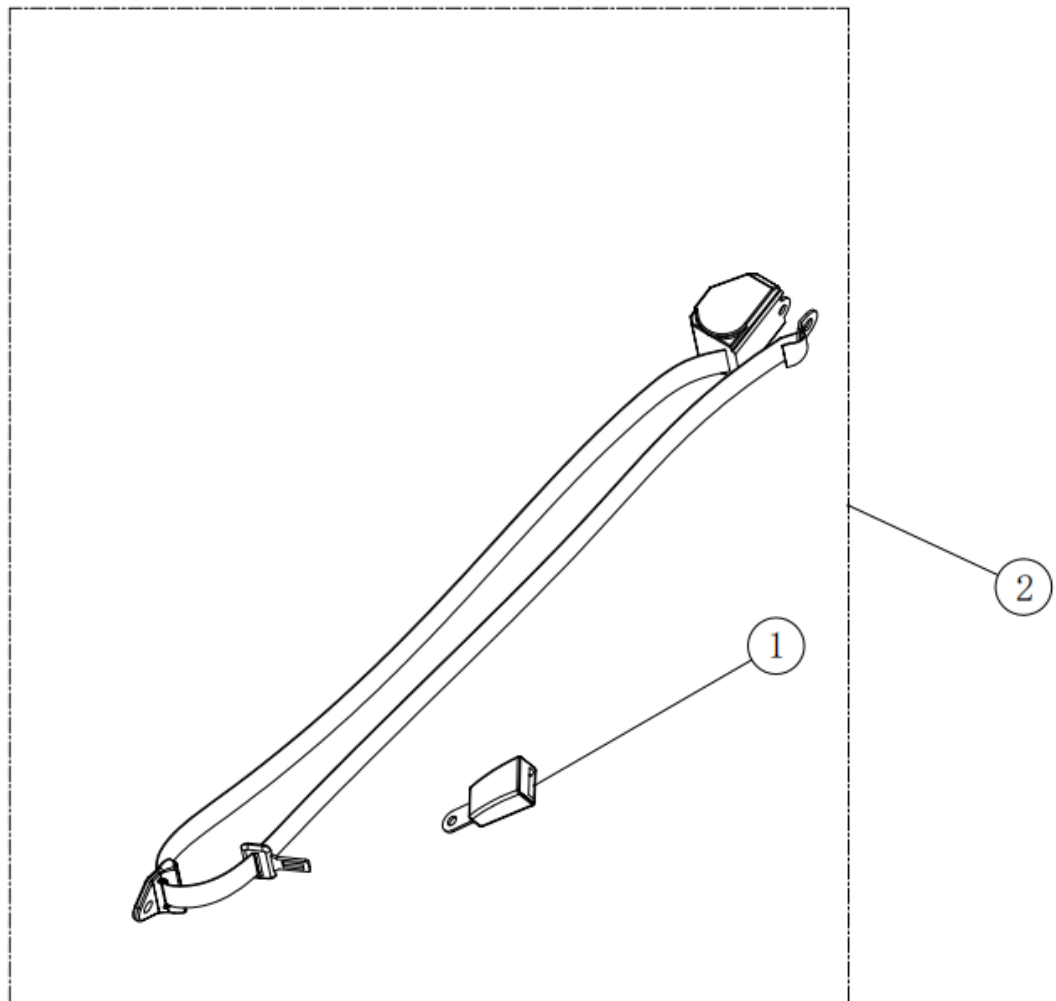
No.	Description	Part Number	Qty
1	Self-tapping bolt 12x1-1/2/1018	4.03.02.06.012	4
2	Side liner in rear body base LH, fasteners included	4.05.01.01.016	1
3	Plastic Rivet C104	4.05.04.05.003	30
4	Mud guard LH and RH	3.06.01.09.002	2
5	Rear liner	4.05.01.01.012	1
6	Self-tapping bolt 12x1-1/2/1018	4.03.02.06.012	2
7	Side liner in rear body base RH, fasteners included	4.05.01.01.017	1
8	Access panel in rear cover base, fasteners included	4.05.01.01.015	1
9	Rear base under body	4.05.01.01.013	1
10	Stainless steel hexagon bolt M8x35	4.03.03.04.033	4
11	On/Off switch, fasteners included	4.04.02.01.009	1
12	Plastic rivet C633	4.05.04.05.006	2
13	Battery rear cover board	4.05.01.01.119	1
14	Stainless steel self-tapping screw M5x16 /black	4.03.03.08.002	6
15	Rear body base plug hole cap	4.05.01.01.045	2



No.	Description	Part Number	Qty
1	Seat bottom with double diamond pattern (Black)	4.05.01.07.01.005	1
2	Hip restraint RH, w/ fasteners	4.05.01.33.002	1
3	Pan head phillips self-tapping screw M6x30/1018	4.03.03.08.002	2
4	Seat bottom tray	4.05.01.01.038	1
5	Flange screw M6x20/1035	4.03.02.01.004	10
6	Seat hinge/up	3.01.01.010	2
7	Stainless less large flat head self-tapping screw M5x25 /black	4.03.03.15.017	12
8	Hip restraint LH, w/ fasteners	4.05.01.33.001	1
9	Front seat bottom and armrest assembly w/ fasteners	2.01.01.01.009	1

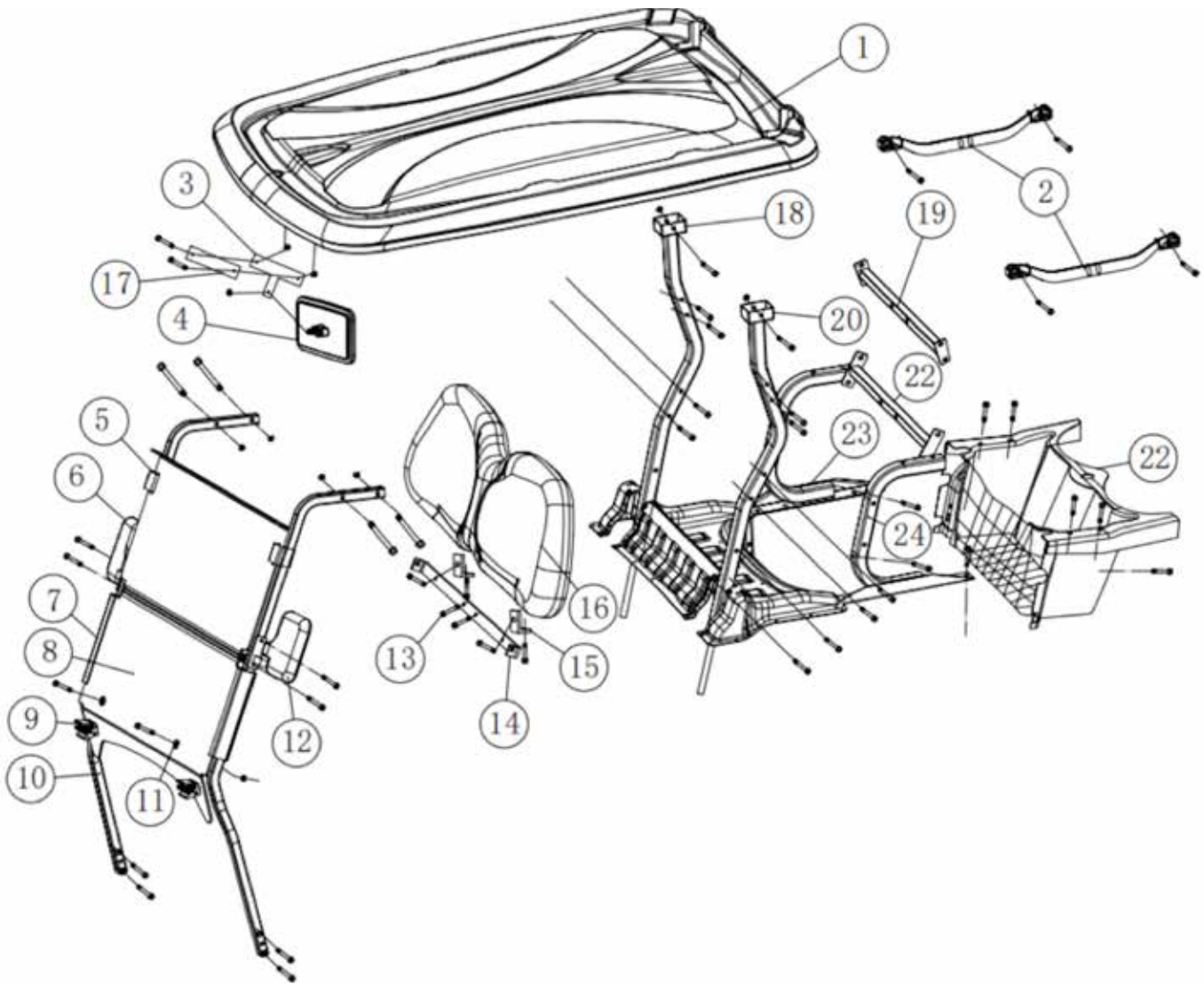


No.	Description	Part Number	Qty
1	Oval EVA spacer under seat, 3mm	4.05.04.02.015	6
2	Oval EVA spacer under seat, 3mm LH	4.05.04.02.016	1
3	Oval EVA spacer under seat, 3mm RH	4.05.04.02.017	1



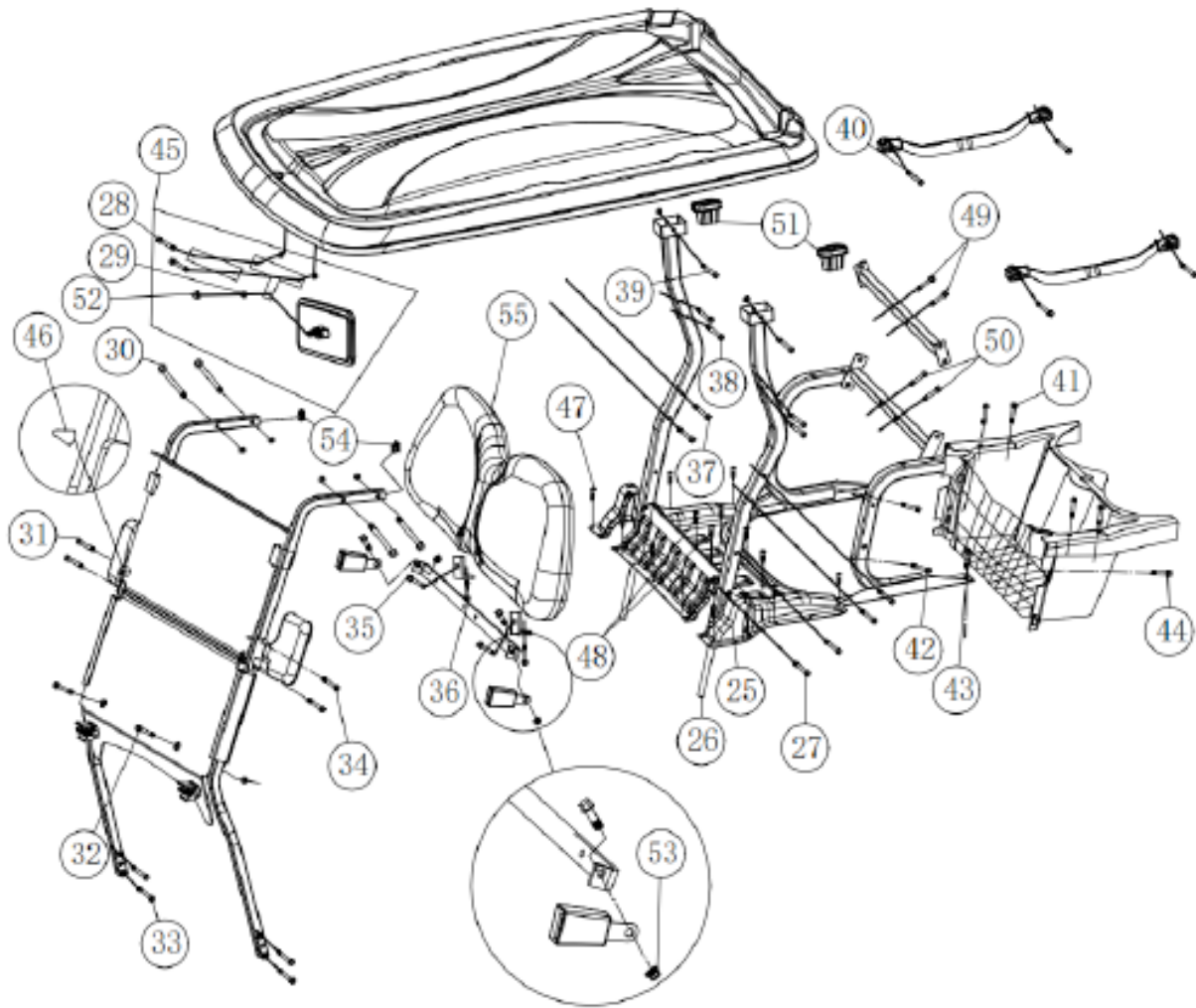
No.	Description	Part Number	Qty
1	Lock for 3-point seat belt	4.05.01.16.006	1
2	3-point seat belt (DOT)	4.05.01.16.004	1

Split Windshield, Top Assembly and Rear Basket Assembly

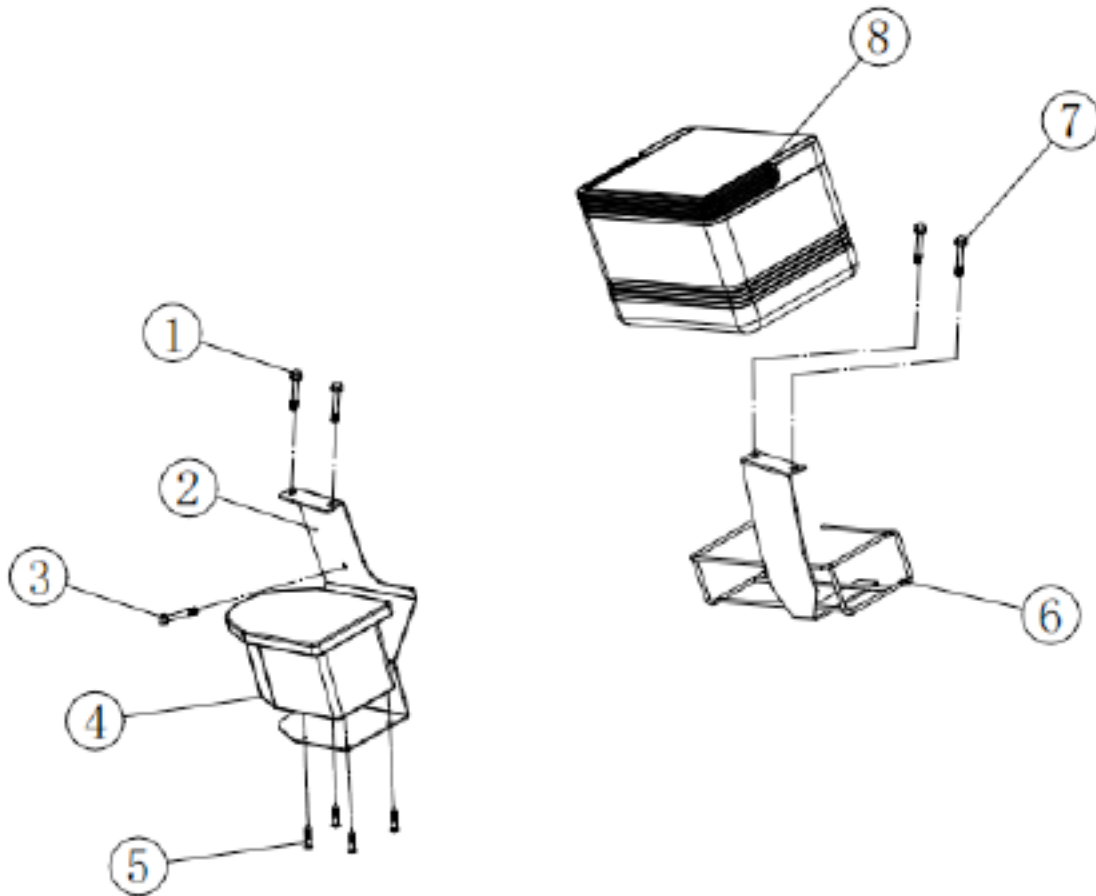


No.	Description	Part Number	Qty	No.	Description	Part Number	Qty
1A	2P Canopy (Black)	4.05.01.09.012	1	13	Stainless steel hexagon M8x25	4.03.03.04.024	2
1B	2P Canopy (painted color)	3.06.01.03.02.003	1	14	Seat belt mntg brkt, w/fasteners	3.02.01.33.0104	1
2	Roof grab handle, w/ fasteners	4.05.01.09.013	2	15	Seat belt fixing bracket	3.02.01.33.113	2
3	Center mirror bracket	3.02.01.01.210	1	16	Seatback assembly, w/fasteners	4.05.01.07.01.006	1
4	Center mirror, w/ fasteners	4.05.01.13.006	1	17	Canopy cntr mirror frame spacer	3.02.01.01.209	1
5	Folding windshield retainer rubber pad / upper	4.05.02.02.016	2	18	2P canopy rear support tube aluminum RH	3.02.01.26.54	1
6	Side mirror RH, brkt & fasteners	4.05.01.13.003	1	19	Seat belt fixed top bar	3.02.01.33.039	1
7	Folding windshield retainer	4.05.02.02.002	2	20	2P canopy rear support tube aluminum LH	3.02.01.26.53	1
8	2P Folding wndshld, w/fasteners	4.05.02.01.151	1	21	Seat belt fixed lower bar	3.02.01.08.028	1
9	Folding windshield retainer rubber pad / down	4.05.02.02.017	2	22	Rear basket	4.05.01.01.053	1
10	Folding windshld roof support, aluminum (set of 2) w/ fasteners	3.02.01.26.057	1	23	Rear basket support tube RH	3.02.01.26.056	1
11	Folding windshield gasket	4.05.02.02.003	2	24	Rear basket support tube LH	3.02.01.26.055	1
12	Side mirror LH, brkt & fasteners	4.05.01.13.002	1				

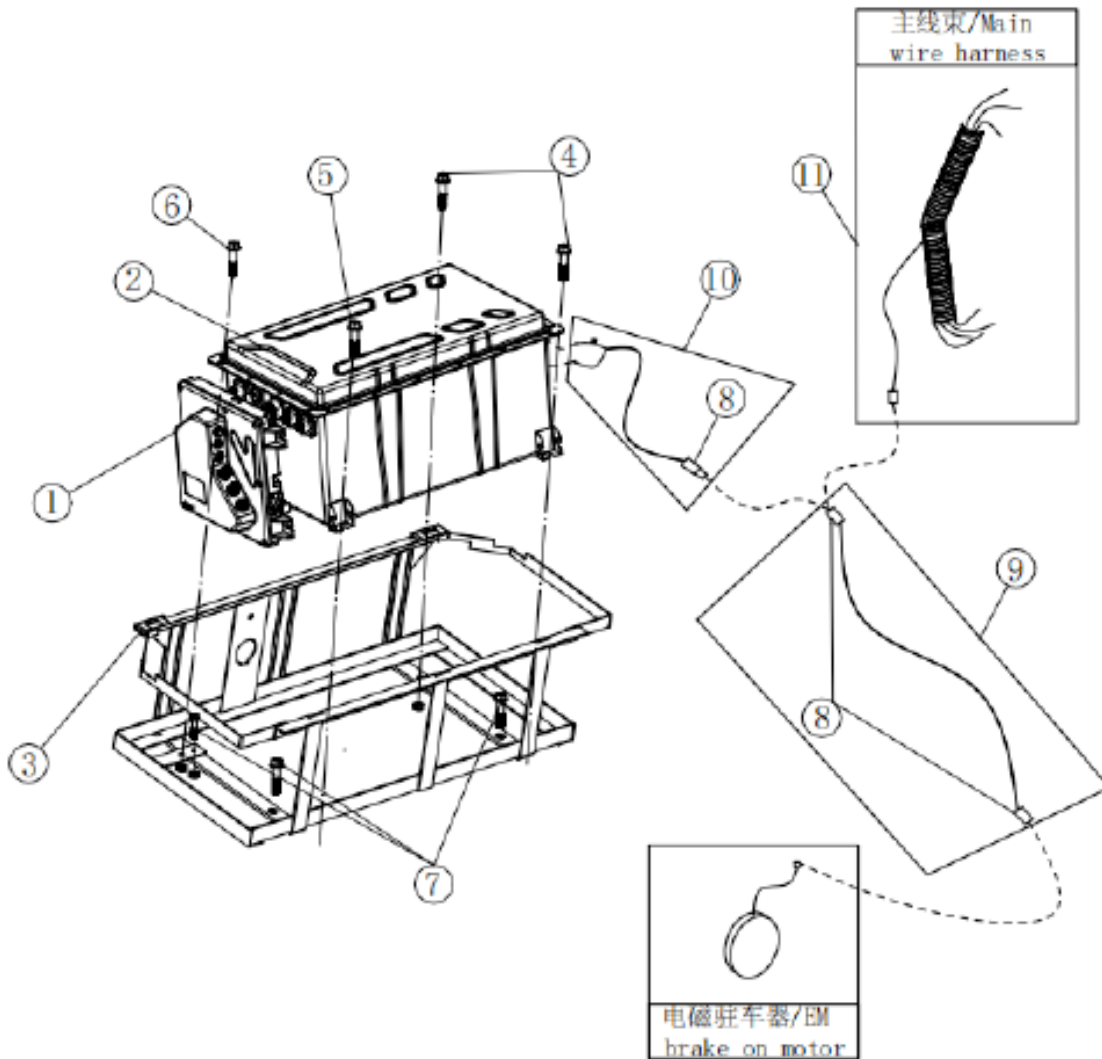
Split Windshield, Top Assembly and Rear Basket Assembly



No.	Description	Part Number	Qty	No.	Description	Part Number	Qty
25	Plastic cover under rear basket	4.05.01.01.049	1	43	Stainless steel hex. bolt M8x35	4.03.03.04.033	2
26	Foam drain pipe 540mm	4.05.01.41.007	2	44	Stainless steel hex. screw M8x25	4.03.03.04.024	2
27	Stainless steel hex. screw M8x85	4.03.03.04.006	4	45	2P Center mirror kit /bracket and fasteners included	2.01.01.01.012	1
28	Stainless steel hex. screw M8x20	4.03.03.04.037	2	46	Rubber plug on windshield	4.05.02.02.025	2
29	Stainless steel hex. M8 nut	4.03.04.04.004	1	47	Stainless steel flat hd self-tapping screw M5x16 /black	4.03.03.15.010	12
30	Stainless steel hex. screw M8x50	4.03.03.04.028	4	48	Stainless steel flat hd self-tapping screw M5x25 /black	4.03.03.15.017	2
31	Stainless steel hex. screw M6x45	4.03.03.04.022	2	49	Stainless steel hex. bolt M8x45	4.03.03.04.027	2
32	Stainless steel hex. screw M6x50	4.03.03.04.039	2	50	Stainless steel hex. bolt M8x40	4.03.03.04.026	2
33	Flange screw M8x80/1035	4.03.02.01.025	4	51	Roof rear support water guide head	4.05.01.09.008	2
34	Stainless steel hex. screw M6x45	4.03.03.04.022	2	52	M8 nut cap	4.05.04.04.009	1
35	Stainless steel hex. screw M8x30	4.03.03.04.025	2	53	Stainless steel nylon hexagonal self-locking nut M8	4.03.04.04.021	4
36	Stainless steel hex. screw M8x35	4.03.03.04.033	2	54	Square pipe plug 25x25	4.05.04.03.001	2
37	Stainless steel hex. screw M8x55	4.03.03.04.036	4	55	Front backrest plastic board	4.05.01.07.01.008	1
38	Stainless steel hex. screw M8x55	4.03.03.04.036	4				
39	Stainless steel hex. screw M8x60	4.03.03.04.029	2				
40	Stainless steel hex. screw M6x45	4.03.03.04.022	4				
41	Stainless steel hex. screw M8x50	4.03.03.04.028	4				
42	Stainless steel hex. screw M6x70	4.03.03.04.023	4				

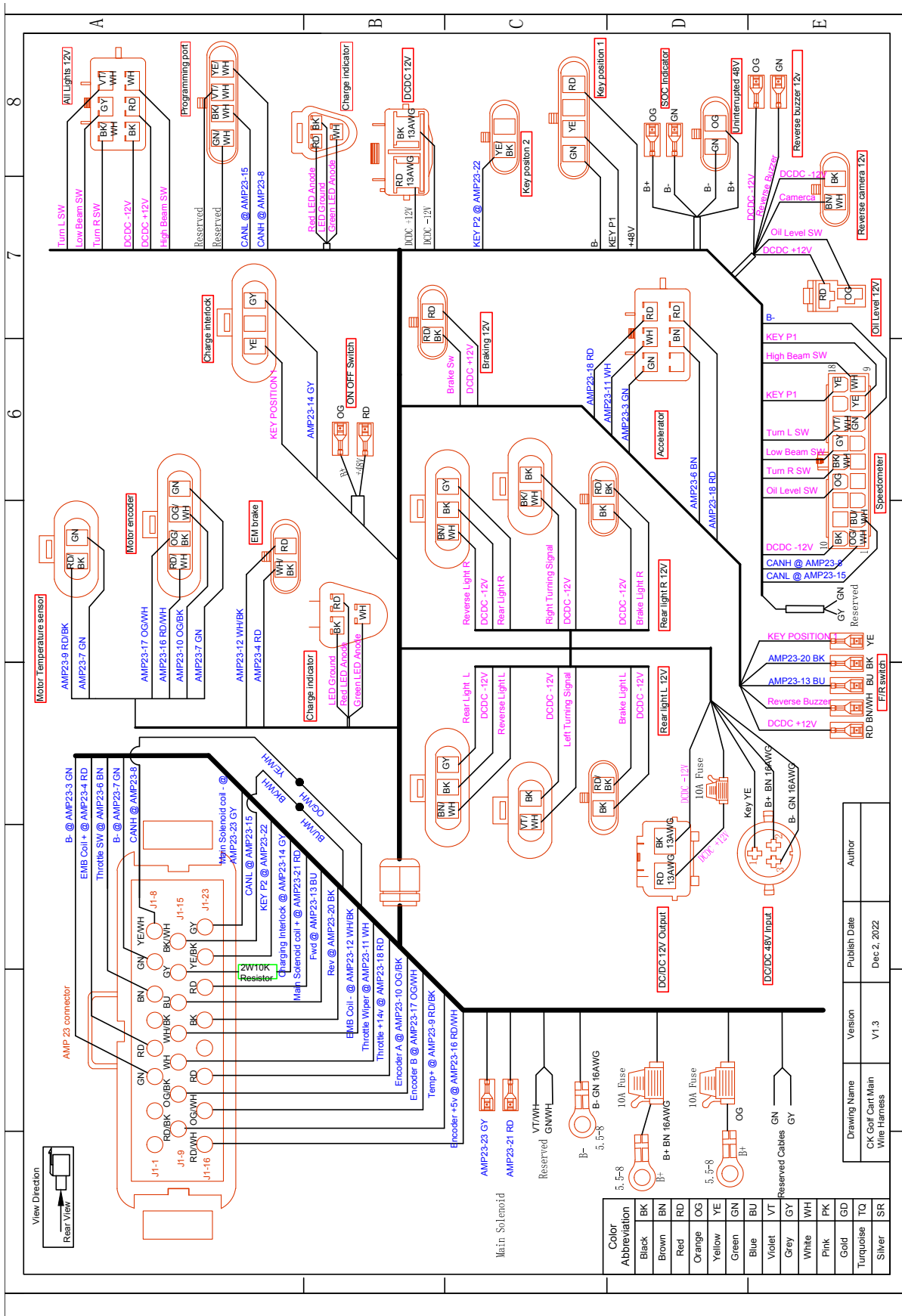


No.	Description	Part Number	Qty
1	Stainless steel bolt M8x60	4.03.03.04.029	2
2	Ball washer bracket LH	3.02.01.26.035	1
3	Stainless steel bolt M8x20	4.03.03.04.037	1
4	Ball washer	4.05.01.11.001	1
5	Stainless steel cross large buckle head self-tapping screw M5x16	4.03.03.15.010	4
6	Large ice box bracket RH	3.02.01.01.018	1
7	Stainless steel bolt M8x60	4.03.03.04.029	2
8	Large ice box	4.05.01.10.002	1

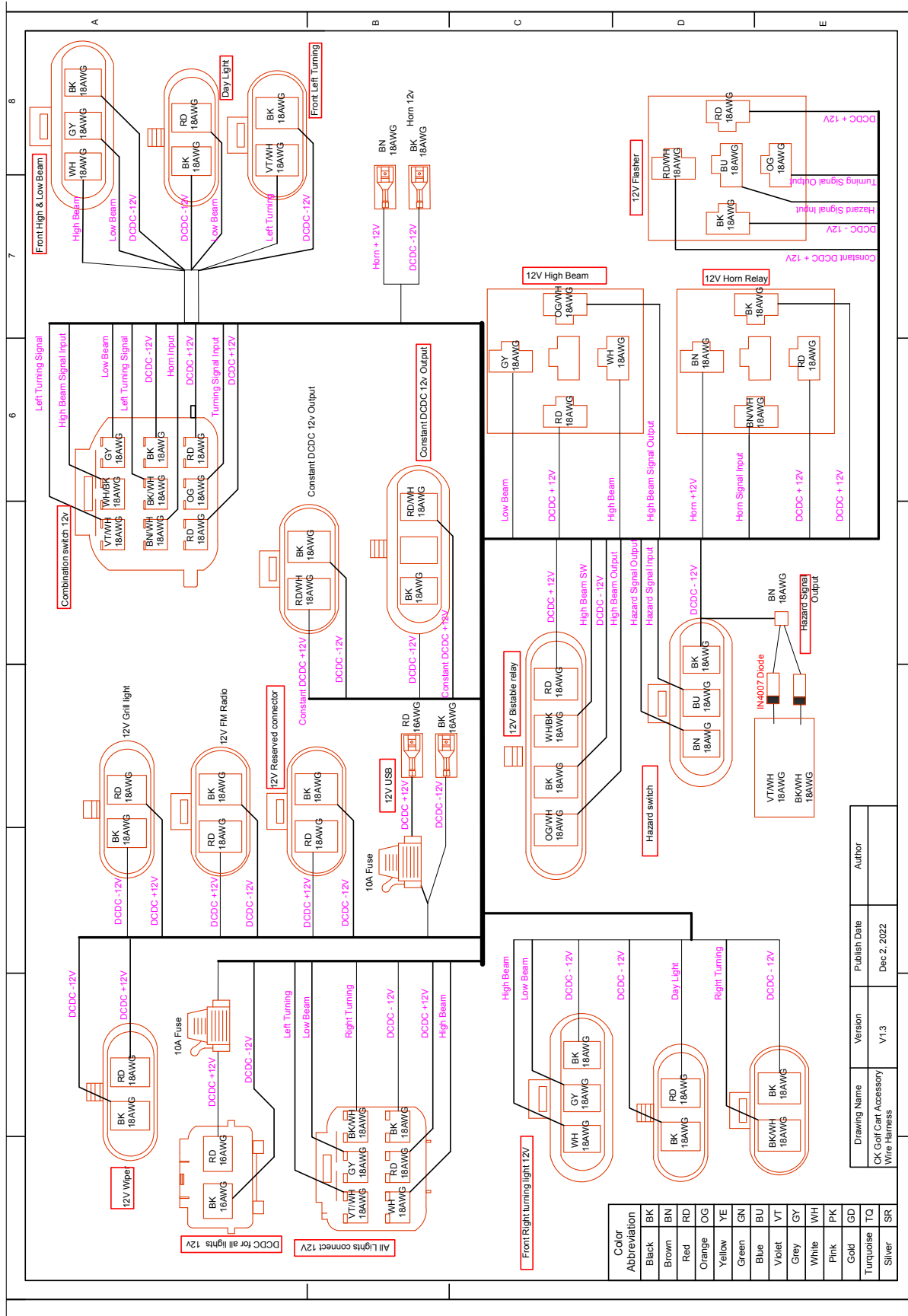


No.	Description	Part Number	Qty
1	BMS BI5116 box	Y.02.02.0004	1
2	48V 210 Amp Hr lithium battery	4.04.01.09.130	1
3	Lithium battery holder	3.02.01.08.029	1
4	Flange screw M6x125/1035	4.03.02.01.091	2
5	Flange screw M6x45/1035	4.03.02.01.009	1
6	Flange screw M6x60/1035	4.03.02.01.012	1
7	Hexagon washer self-drilling screw M8-12x50/1022a	4.03.02.06.023	3
8A	Male end cap 302A0242 for EM brake cable	4.04.06.29.001	1
8B	Female end cap 302A0242 for EM brake cable	4.04.06.29.002	1
9	EM brake extend cable 1M	2.01.02.11.049	1
10	EM brake wire harness	2.01.02.11.050	1
11	2P/4P Main wire harness	4.04.03.16.044	1

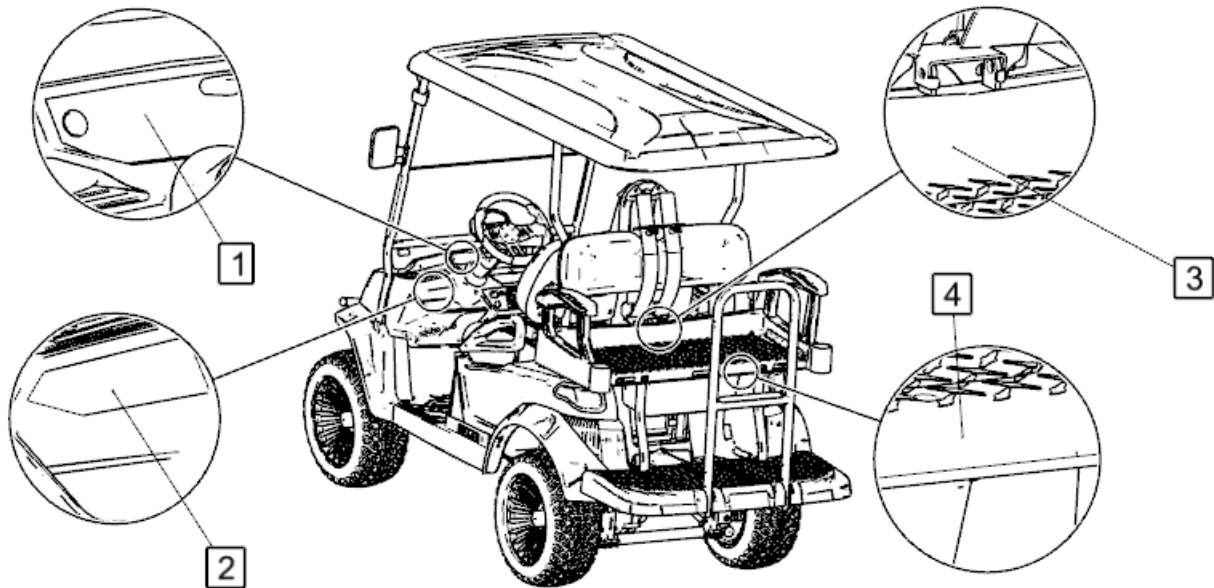
Main Wire Harness



Accessory Wire Harness



No.	Description	Part Number
1	Front head light	
2	Running light	
3	Turn signal	
4	Flasher	(4.04.02.04.008)
5	Horn relay	(4.04.02.05.031)
6	High beam relay	(4.04.02.05.031)
7	Hazard light switch	(4.04.02.11.002)
8	Bistable relay	(4.04.14.02.020)
9	Front storage light	
10	Continuous DCDC input	
11	Reserved	
12	Reserved	
13	Grill light	
14	Reserved	
15	Reserved	
16	DCDC output	
17	USB port	
18	Taillight	
19	Combination switch	
20	Front head light	
21	Running light	
22	Turn signal	



WARNING

SERIOUS INJURY OR DEATH MAY OCCUR WITH UNINTENDED MOVEMENT, COLLISION, ROLLOVERS OR FALLING OUT FROM VEHICLE
 MAXLOAD: 2P = 500 lbs. MAX GRADE: 20%
 4P = 900 lbs.

- Only authorized and/or licensed personnel should operate this vehicle
- All operators should follow in compliance with local and state laws
- Uneaved surfaces, high traffic areas and driving near higher speed vehicles should be done with caution
- Do not obstruct traffic with operation of this vehicle
- All occupants should be fully seated before the start and operation of this vehicle
- Maximum occupants per bench seat is two (2)
- Only driver side occupant should operate this vehicle
- Children should not be unattended with vehicle at any time
- Slower speed should be used when making turns and driving on inclined/declined surfaces
- Occupants should keep entire body secure within vehicle while vehicle is in motion
- This vehicle should not be operated under the influence of drugs or alcohol
- This vehicle should not be operated when distracted

1 Part No. 4.05.03.01.045.06 Quantity 1

OPERATING INSTRUCTIONS

Users should read the vehicle manual and safety warnings to fully understand vehicle operation before use.

- Turn wheels in the direction of a clear path.
- Turn key to the ON position.
- Only shift to forward or reverse when vehicle is completely stopped
- Pressing on accelerator pedal will cause vehicle to move
- To increase vehicle speed, gradually press accelerator pedal
- Release accelerator pedal and press down brake pedal to "bring" vehicle to full stop
- Severe injury or death may occur with unintended vehicle movement
- Make sure parking brake is engaged when not in operation
- Vehicle should be placed in Neutral when parking
- Turn key to the off position and remove from key hole when not in operation

2 Part No. 4.05.03.01.045.05 Quantity 1

WARNING!

DO NOT RIDE IN CARGO BED

- Cargo bed is NOT intended as passenger seating, do not ride in cargo bed
- Severe injury or death may occur to passengers riding in cargo bed

CARGO BED MAX CAPACITY: 150b/68kg

3 Part No. 4.05.03.01.045.07 Quantity 1

WARNING!

SERIOUS INJURY OR DEATH MAY OCCUR WHEN EJECTED FROM OR FALLING OUT OF VEHICLE.

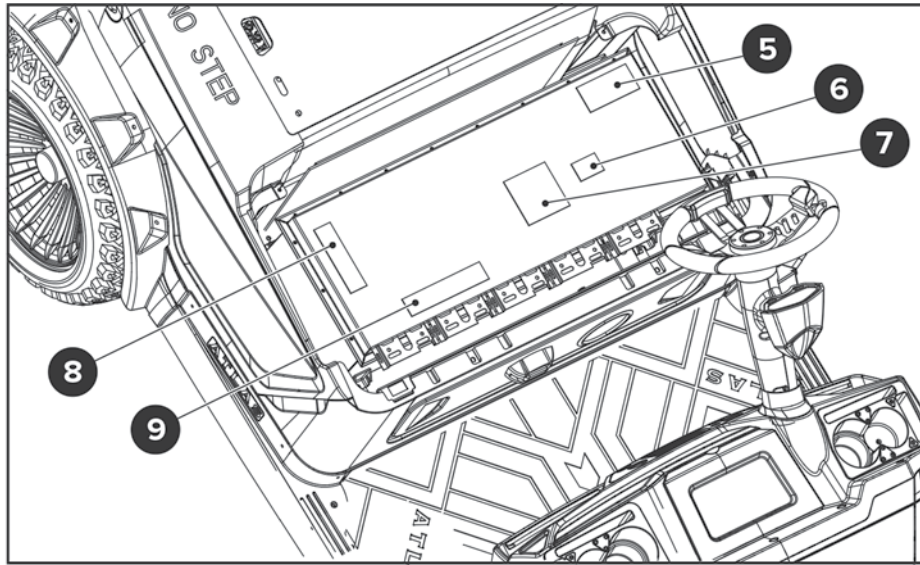
- Maximum occupants per bench seat is two(2)
- Entire body should be kept within moving vehicle
- Occupants should hold on to grab bars securely while vehicle is in motion

4 Part No. 4.05.03.01.045.08 Quantity 1

WARNING!

SERIOUS INJURY OR DEATH MAY OCCUR WHEN EJECTED FROM OR FALLING OUT OF VEHICLE.

- Occupants should remain fully seated in vehicle while it is in motion
- Children should not be unattended with this vehicle at anytime. Children who may require a child safety seat should not ride in this vehicle



5



Part No. Quantity
4.05.03.01.045.01 1

6



Part No. Quantity
4.05.03.01.045.02 1

7



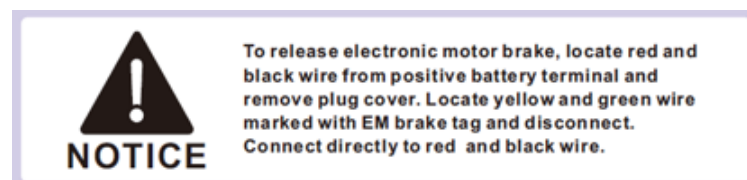
Part No. Quantity
4.05.03.01.045.04 1

8

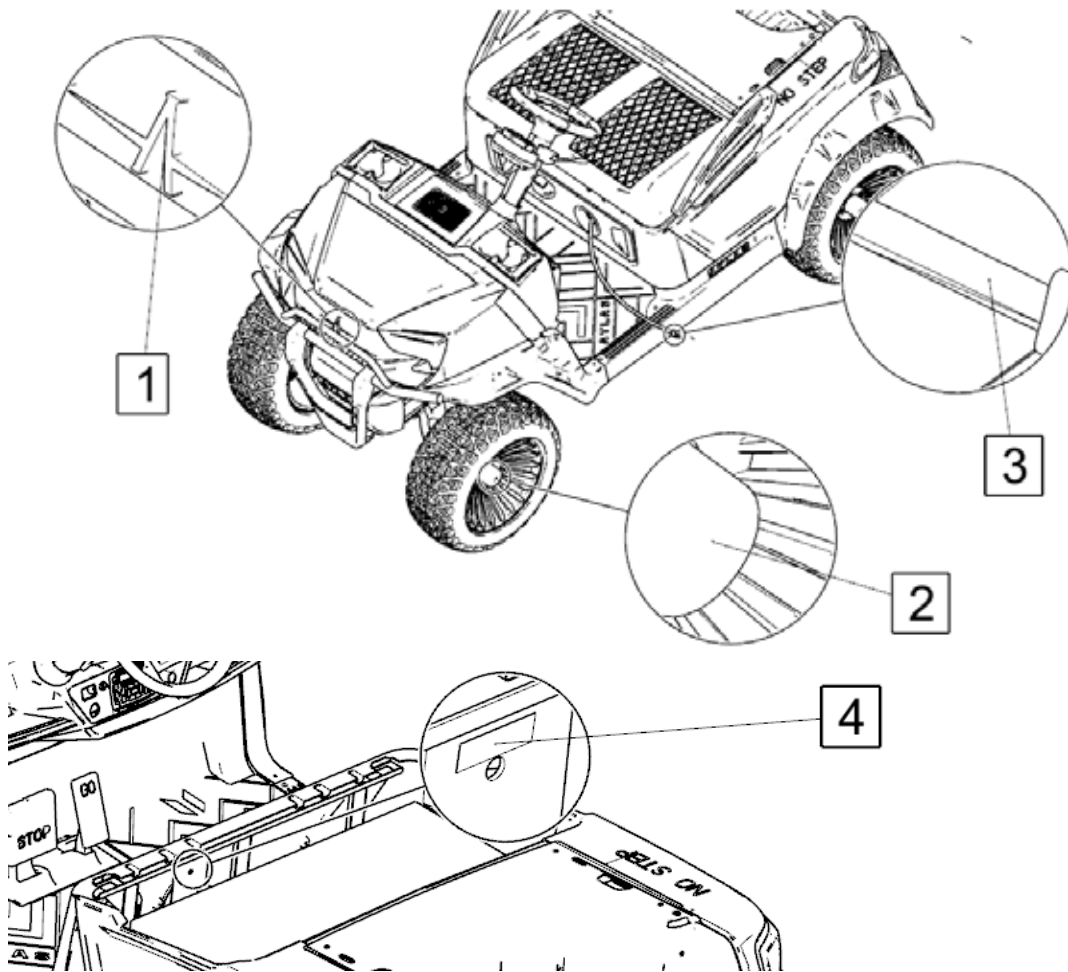


Part No. Quantity
4.05.03.01.045.03 1

9



Part No. Quantity
4.05.03.01.045.09 1



1



Front Logo

Part No.
4.05.03.01.009

Quantity
1

2



Wheel Logo

Part No.
4.05.03.01.004

Quantity
4

3



AC Cord Warning Decal

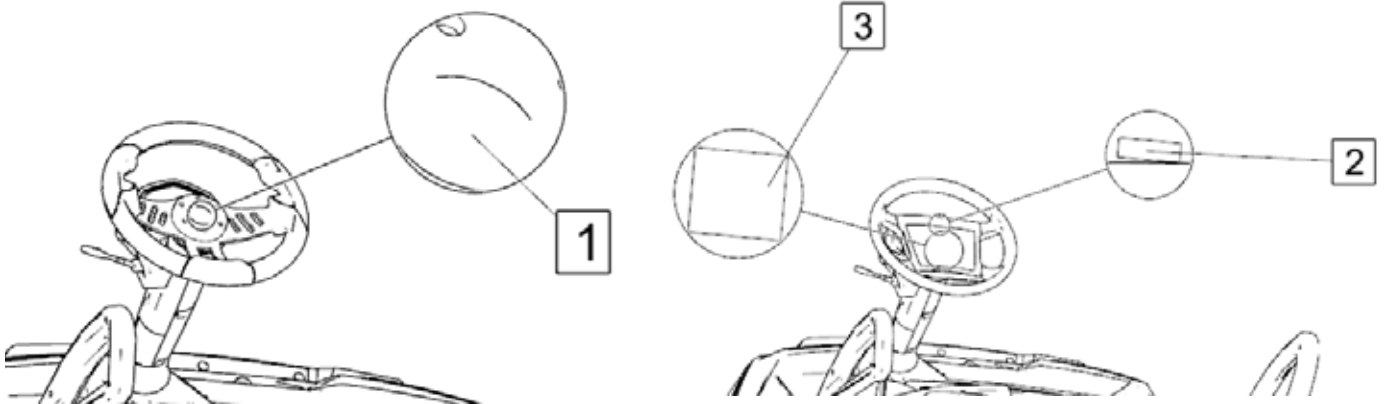
Part No. Quantity
4.05.03.01.045:10 1

4



ON / OFF Decal

Part No. Quantity
4.05.03.01.042 1



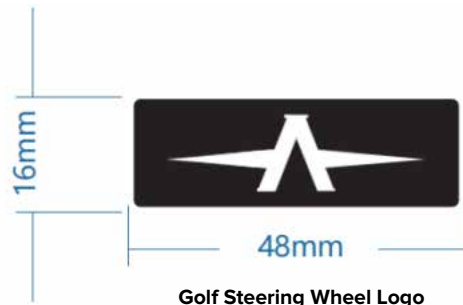
1



Sport Steering Wheel Logo

Part No.	Quantity
4.05.03.01.014.01	1

2



Golf Steering Wheel Logo

Part No.	Quantity
4.05.03.01.014.02	1

3



Operation Guide for Golf Steering Wheel

Part No.	Quantity
4.05.03.01.013	1

